

# BUKTI KORESPONDENSI

Untuk melihat bukti korespondensi secara lengkap dapat mengakses :

Laman web: <https://ijere.iaescore.com/index.php/IJERE/index>

User ID: samsul

Password: 12345678


## 1. Proses Submit

The screenshot shows the submission page for article #23046 in the International Journal of Evaluation and Research In Education (IJERE). The page is divided into several sections:

- Header:** Includes the IJERE logo, website URL (http://ijere.iaescore.com), ISSN (2252-8822), e-ISSN (2620-5440), and various accreditation logos (Crossref 1.3, Q3, S4, S5, and Intellectual Pustaka Media Utama).
- Navigation:** A menu bar with options: HOME, ABOUT, USER HOME, SEARCH, CURRENT, ARCHIVES, ANNOUNCEMENTS.
- Breadcrumbs:** Home > User > Author > Submissions > #23046 > Summary
- Submission Summary:**
  - Title:** Sociomathematical norms in online learning in the COVID-19 pandemic period
  - Original file:** [23046-14956-1-SM.DOCX](#) 2021-10-13
  - Supp. files:** None
  - Submitter:** Samsul Maarif
  - Date submitted:** October 13, 2021 - 02:01 AM
  - Section:** General Education Concepts
  - Editor:** Jonathan deHaan, Ph.D. (Review), Yeo Jiar (Review), Sagini Keengwe (Review), Elina Maslo (Review)
  - Abstract Views:** 602
- Submission Metadata:**
  - Authors:**
    - Name:** Samsul Maarif
    - Affiliation:** Universitas Muhammadiyah Prof. Dr. HAMKA
    - Country:** Indonesia
    - Bio Statement:** —
  - Principal contact for editorial correspondence:**
    - Name:** Novia Oktarina
    - Affiliation:** Universitas Muhammadiyah Prof. Dr. HAMKA
    - Country:** Indonesia
    - Bio Statement:** —
  - Name:** Sandi Sessu
  - Affiliation:** Universitas Muhammadiyah Prof. Dr. HAMKA
  - Country:** Indonesia
  - Bio Statement:** —
  - Name:** Filtria Sulistyowati
  - Affiliation:** Universitas Sarjanawiyata Tamansiswa
  - Country:** Indonesia
  - Bio Statement:** —
  - Name:** Wikan Budi Utami
  - Affiliation:** Universitas Negeri Malang
  - Country:** Indonesia
  - Bio Statement:** —
- Title and Abstract:** (Partially visible)

- Right Sidebar:**
- USER:** You are logged in as... samsul. Links: My Profile, Log Out.
- CITATION ANALYSIS:** Google Scholar, Scholar Metrics, Scinapse, Scopus, ERIC, Web of Science.
- QUICK LINKS:** Author Guideline, Editorial Boards, Online Submissions, Abstracting and Indexing, Publication Ethics, Visitor Statistics, Contact Us.
- Archive (2), New Submission**
- JOURNAL CONTENT:** Search bar, Search Scope (All), Search button, Browse options (By Issue, By Author, By Title).
- INFORMATION:** For Readers, For Authors, For Librarians.

## 2. Proses Reviu



http://ijere.iaescore.com | ISSN 2252-8822, e-ISSN 2620-5440

1.3 Scopus Q3 SJR 2021 0.236 SNIP 2021 0.582

Intelektual Pustaka Media Utama

HOME ABOUT USER HOME SEARCH CURRENT ARCHIVES ANNOUNCEMENTS

Home > User > Author > Submissions > #23046 > Review

### #23046 Review

SUMMARY REVIEW EDITING

#### Submission

Authors Samsul Maarif, Novia Oktarina, Sandi Sessu, Fitri Sulistyowati, Wikan Budi Utami  
Title Sociomathematical norms in online learning in the COVID-19 pandemic period  
Section General Education Concepts  
Jonathan deHaan, Ph.D. (Review)  
Yeo Jiar (Review)  
Editor Sagini Keengwe (Review)  
Elina Maslo (Review)

#### Peer Review

Round 1  
Sagini Keengwe (Review)  
Elina Maslo (Review)


#### Peer Review


Round 1  
Review Version [23046-44967-1-RV.DOCX](#) 2021-10-13  
Initiated 2021-10-13  
Last modified 2021-10-22  
Uploaded file Reviewer C [23046-45109-1-RV.DOCX](#) 2021-10-21

#### Editor Decision

Decision Accept Submission 2021-11-14  
Notify Editor Editor/Author Email Record 2021-11-14  
Editor Version None  
Author Version [23046-45209-1-ED.DOCX](#) 2021-10-25 [DELETE](#)  
[23046-45209-2-ED.DOCX](#) 2021-10-30 [DELETE](#)  
Upload Author Version  No file chosen

**International Journal of Evaluation and Research in Education (IJERE)**  
p-ISSN: 2252-8822, e-ISSN: 2620-5440

  
[View IJERE Stats](#)

  
This work is licensed under a [Creative Commons Attribution-ShareAlike 4.0 International License](#).

#### USER

You are logged in as...  
**samsul**

- My Profile
- Log Out

#### CITATION ANALYSIS

- Google Scholar
- Scholar Metrics
- Scinapse
- Scopus
- ERIC
- Web of Science

#### QUICK LINKS

- Author Guideline
- Editorial Boards
- Online Submissions
- Abstracting and Indexing
- Publication Ethics
- Visitor Statistics

#### QUICK LINKS

- Author Guideline
- Editorial Boards
- Online Submissions
- Abstracting and Indexing
- Publication Ethics
- Visitor Statistics
- Contact Us

#### AUTHOR

##### Submissions

- Active (0)
- Archive (2)
- New Submission

#### JOURNAL CONTENT

Search

Search Scope  
All

##### Browse

- By Issue
- By Author
- By Title

#### INFORMATION

- For Readers
- For Authors
- For Librarians

## Editor/Author Correspondence

Editor Subject: [IJERE] Editor Decision

[DELETE](#)

2021-10-22 03:23 AM

The following message is being delivered on behalf of International Journal of Evaluation and Research in Education (IJERE).

Dear Prof/Dr/Mr/Mrs: Samsul Maarif,

We have reached a decision regarding your submission entitled "Sociomathematical Norms in Online Learning in the Covid-19 Pandemic Period Viewed from the Gender of Student Aspect: Case in Senior High School at 73 Jakarta" to International Journal of Evaluation and Research in Education (IJERE), a SCOPUS and ERIC indexed journal (<https://bit.ly/2E18hDJ>).

Our decision is to ACCEPT with revisions. Please prepare your revised paper (in MS Word or LATEX file format) adheres every detail of the guide of authors (<http://tiny.cc/iaesijere>, or <http://tiny.cc/ijerelatex> for LATEX file format), and check it for spelling/grammatical mistakes.

The goal of your revised paper is to describe novel technical results.

A high quality paper MUST has:

- (1) a clear statement of the problem the paper is addressing --> explain in "Introduction" section
- (2) the proposed solution(s)/method(s)/approach(es)/framework(s)/ ....
- (3) results achieved. It describes clearly what has been done before on the problem, and what is new.

Please submit your revised paper within 6 weeks.

I look forward for hearing from you

Thank you

Best Regards,  
Dr. Lina Handayani  
Universites Ahmad Dahlan  
Phone +62274379418  
Fax +62274381523  
[linafkm@gmail.com](mailto:linafkm@gmail.com)

[ijere.iaescore.com/index.php/IJERE/author/viewEditorDecisionComments/23046#14936](http://ijere.iaescore.com/index.php/IJERE/author/viewEditorDecisionComments/23046#14936)

=====  
IMPORTANT!!  
=====

For ORIGINAL/RESEARCH PAPER: the paper should be presented with IMRaD model:

1. Introduction
2. Research Method
3. Results and Discussion
4. Conclusion

We will usually expect a minimum of 30 references primarily to journal papers. Citations of textbooks should be used very rarely and citations to web pages should be avoided. All cited papers must be referenced within the body text of the manuscript.

For REVIEW PAPER: the paper should present a critical and constructive analysis of existing published literature in a field, through summary, classification, analysis and comparison. The function and goal of the review paper is:

- 1) to organize literature;
- 2) to evaluate literature;
- 3) to identify patterns and trends in the literature;
- 4) to synthesize literature; or
- 5) to identify research gaps and recommend new research areas.

The structure of a review paper includes:

1. Title - in this case does not indicate that it is a review article.
2. Abstract - includes a description of subjects covered.
3. Introduction includes a description of context (paragraph 1-3), motivation for review (paragraph 4, sentence 1) and defines the focus (paragraph 4, sentences 2-3)
4. Body - structured by headings and subheadings
5. Conclusion - states the implications of the findings and an identifies possible new research fields

Number of minimum references for review paper is 50 references (included minimum 40 recently journal articles).

-----  
In preparing your revised paper, you should pay attention to:

1. Please ensure that: all references have been cited in your text; Each citation should be written in the order of appearance in the text; The citations must be presented in numbering and CITATION ORDER is SEQUENTIAL [1], [2], [3], [4], .....

Please download & study our published papers for your references:

- <http://ijere.iaescore.com>
- <http://journal.uad.ac.id/index.php/edulearn>
- <http://ijece.iaescore.com>
- <http://ijeecs.iaescore.com>

(Please use "Search" menu under "JOURNAL CONTENT" menu in right side of the site)

In preparing your revised paper, you should pay attention to:  
1. Please ensure that: all references have been cited in your text; Each citation should be written in the order of appearance in the text; The citations must be presented in numbering and CITATION ORDER is SEQUENTIAL [1], [2], [3], [4], .....  
Please download & study our published papers for your references:  
- <http://ijere.iaescore.com>  
- <http://journal.uad.ac.id/index.php/edulearn>  
- <http://ijece.iaescore.com>  
- <http://ijeecs.iaescore.com>  
(Please use "Search" menu under "JOURNAL CONTENT" menu in right side of the site)

2 An Introduction should contain the following three (3) parts:  
- Background: Authors have to make clear what the context is. Ideally, authors should give an idea of the state-of-the art of the field the report is about.  
- The Problem: If there was no problem, there would be no reason for writing a manuscript, and definitely no reason for reading it. So, please tell readers why they should proceed reading. Experience shows that for this part a few lines are often sufficient.  
- The Proposed Solution: Now and only now! - authors may outline the contribution of the manuscript. Here authors have to make sure readers point out what are the novel aspects of authors work. Authors should place the paper in proper context by citing relevant papers. At least, 5 references (recently journal articles) are cited in this section.  
3. Results and discussion section: The presentation of results should be simple and straightforward in style. This section report the most important findings, including results of statistical analyses as appropriate. You should present the comparison between performance of your approach and other researches. Results given in figures should not be repeated in tables. It is very important to prove that your manuscript has a significant value and not trivial.

Update your metadata in our online system when you submit your revised paper through our online system, included:  
- Authors name are presented without salutation  
- Authors Name are presented Title Case (ex: Michael Lankan, and NOT written--> michael lankan or MICHAEL LANKAN). Add all authors of your paper as per your revised paper  
- Title of revised paper (ex: Application of space vector .... , NOT --> APPLICATION OF SPACE VECTOR ....)  
- Content of updated abstract

Update your metadata in our online system when you submit your revised paper through our online system, included:  
- Authors name are presented without salutation  
- Authors Name are presented Title Case (ex: Michael Lankan, and NOT written--> michael lankan or MICHAEL LANKAN). Add all authors of your paper as per your revised paper  
- Title of revised paper (ex: Application of space vector .... , NOT --> APPLICATION OF SPACE VECTOR ....)  
- Content of updated abstract

Reviewer C:

The IJERE form to evaluate submitted papers  
Content:  
Good

Significance:  
Good

Originality:  
Good

Relevance:  
Good

Presentation:  
Good

Recommendation:  
Good

Comments to the Author

This comment will be visible to the Author  
:  
please see attachment  
see file

International Journal of Evaluation and Research in Education (IJERE)  
<http://ijere.iaescore.com>

Editor Subject: [IJERE] Editor Decision

[DELETE](#)

2021-11-14 03:37 AM The following message is being delivered on behalf of International Journal of Evaluation and Research in Education (IJERE).

Dear Prof/Dr/Mr/Mrs: Samsul Maarif,

- Mention Table 2 before appeared.
- update references in recent 10 years.

International Journal of Evaluation and Research in Education (IJERE)  
<http://ijere.iaescore.com>

Editor Subject: [IJERE] Editor Decision

[DELETE](#)

2021-11-14 02:26 PM The following message is being delivered on behalf of International Journal of Evaluation and Research in Education (IJERE).

- Authors must strictly follow the guidelines for authors at <http://iaescore.com/gfa/ijere.docx>
- Number of minimum references is 30 sources (mainly journal articles) for research paper
- and minimum 50 sources (mainly journal articles) for review paper

Dear Prof/Dr/Mr/Mrs: Samsul Maarif,

It is my great pleasure to inform you that your paper entitled "Sociomathematical Norms in Online Learning in the Covid-19 Pandemic Period Viewed from the Gender of Student Aspect: Case in Senior High School at 73 Jakarta" is conditionally ACCEPTED and will be published on the International Journal of Evaluation and Research in Education (IJERE), a SCOPUS (<https://www.scopus.com/sourceid/21100934092> or <https://bit.ly/2Yyxtqr>) and ERIC (<https://bit.ly/2E18hDj>) indexed journal. Congratulations!

Please prepare your final camera-ready paper (in MS Word or LATEX file format) adheres to every detail of the guide of authors (MS Word: <http://iaescore.com/gfa/ijere.docx>, or <http://iaescore.com/gfa/ijere.rar> for LATEX file format), and check it for spelling/grammatical mistakes. Then you should upload your final paper to our online system (as "author version" under our decision, NOT as new submission).

You should submit your camera-ready paper (along with your payment receipt and similarity report by iThenticate/Turnitin that less than 20%) within 6 weeks.

I look forward to hearing from you.

Thank you

Best Regards,  
Dr. Lina Handayani

Please ensure that all references have been cited in your text. Each citation should be written in the order of appearance in the text in square brackets. For example, the first citation [1], the second citation [2], and the third and fourth citations [3,4]. When citing multiple sources at once, the preferred method is to list each number separately, in its own brackets, using a comma or dash between numbers, as such: [1], [3], [5] or [4-8]. It is not necessary to mention an author's name, pages used, or date of publication in the in-text citation. Instead, refer to the source with a number in a square bracket, e.g. [9], that will then correspond to the full citation in your reference list. Examples of in-text citations:  
This theory was first put forward in 1970 [9]."  
Bloom [10] has argued that...  
Several recent studies [7], [9], [11-15] have suggested that...  
...end of the line for my research [16].....

## Sociomathematical Norms in Online Learning in the Covid-19 Pandemic Period Viewed from the Gender of Student Aspect: Case in Senior High School at 73 Jakarta

Novia Oktarina<sup>1</sup>, Samsul Maarif<sup>1\*</sup>, Sandi Sessu<sup>1</sup>, Fitria Sulistyowati<sup>2</sup>, Wikan budi Utami<sup>3</sup>

<sup>1</sup>Department of Mathematics Education, Universitas Muhammadiyah Prof. Dr. Hamka, Jakarta

<sup>2</sup>Department of Mathematics Education, Universitas Sarjanawiyata Tamansiswa, Yogyakarta

<sup>3</sup>Department of Mathematics Education, Universitas Pancasakti, Tegal, Central Java

### Article Info

#### Article history:

Received Jun 9, 2018

Revised Nov 20, 2018

Accepted Dec 11, 2018

#### Keywords:

Sociomathematical Norms  
Online Learning  
Gender of Student

### ABSTRACT

The purpose of this study was to analyze students' sociomathematical norms for the formation of study groups conducted by teachers, analyze the role of sociomathematical norms on students' social interactions when learning mathematics, analyze gender differences that can affect students' sociomathematical norms, and analyze sociomathematical norms on derived material in terms of gender aspects. students of SMAN 73 Jakarta. The type of approach used in this research is a qualitative approach with the type of case study research. The subjects of this study were taken purposively, with a total of 9 students with 5 of them being female. data collection techniques using observation, interviews, and documentation. The steps in data analysis are data collection, data reduction, data presentation, and concluding. Based on data collection that has been carried out through the process of observation, interviews, and documentation, it can be concluded that of the four indicators of sociomathematical norms, three indicators of male students are superior to female students. Male students are superior in accepting explanations from teachers, accepting differences of opinion, and mathematical insight. Meanwhile, female students only excel in one indicator, namely the effectiveness of mathematics

*This is an open access article under the [CC BY-SA](#) license.*



### Corresponding Author:

Samsul Maarif,  
Department of Mathematics Education,  
Universitas Muhammadiyah Prof. Dr. Hamka, Jakarta  
Email: samsul\_maarif@uhamka.ac.id

### 1. INTRODUCTION

The concept of norms stems from the broader idea of prescription which means behavior to which other behaviors must adhere [1], [2]. The norm was first used to describe the communication or interaction between teachers and students or between students that occurred in the learning process [3], [4]. Furthermore, in Adults Learning Maths, one of the conference participants said that sociomathematics is an analytical concept, which includes arithmetic, ethnomathematics, and workplace mathematics in a single term; a place where problems arise regarding the relationship between the individual, mathematics, and society, and a core field that combines mathematics, the individual, and society – as found in ethnomathematics, individual mathematics, adult numeracy, and mathematics containing skills [5]–[8]. The norms contained in learning mathematics can be called sociomathematical norms [9]. Sociomathematical norms relate to how students believe and understand mathematical knowledge and place themselves in social interaction in building mathematical knowledge [10], [11]. Sociomathematical norms as being normative understandings of what counts as mathematically different, mathematically sophisticated, efficient, and elegant in a classroom [12].

**Commented [A1]:** Your introduction would be improved by the following (1) state the research contributions more clearly, (2) urgency about how the research was conducted, (3) identify the research gap and the goals of the research, (4) describe knowledge acquisition behaviour concisely, and (5) correct grammar and punctuation errors

The purpose of this statement is that sociomathematical norms are likened to a normative understanding of mathematical assumptions, mathematically sophisticated, efficient, and elegant in the classroom [10], [11]. The conclusion is that the application of sociomathematical norms in the classroom puts forward mathematical principles [13], in which all actions taken must be confident, efficient in finding mathematical concepts, as well as elegant and authoritative in expressing opinions on the mathematical topic being discussed.

Sociomathematical norms are formed as a result of individuals' beliefs, values, and opinions related to mathematics [14]–[16]. In other that sociomathematical norms are formed as a result of individual beliefs, values, and opinions related to mathematics lessons [17], [18]. This is also reinforced by the statement that sociomathematical norms are developed through the interaction of various components in the classroom to the mathematics learning activities presented by the teacher [12], [13], [19]. When the teacher starts learning mathematics in the classroom, the teacher forms a study group with a heterogeneous group, then the teacher gives a problem that must be solved in the group. Then the problems that have been solved in the group are discussed again in front of the class. At this time the teacher facilitates students by directing students to be able to represent the mathematical values that are in their minds while still applying the prevailing social values. These social values are that accuracy is more important than speed in determining answers, the need for efficiency, and writing down answers that are believed to be correct

A sociomathematical norm is the consideration of a mathematically acceptable explanation in conjunction with an understanding of what has been mathematically different [12], [20], [21]. Sociomathematical norm is a thought from a group's mathematical discussion together with mathematical understanding [13], [22]. The teacher presents a mathematics lesson by developing sociomathematical norms through the interaction of various components in the classroom [23]. These learning activities are developed through the provision of mathematical problems that must be solved through the formation of study groups. Where the formation of this study group is useful to unite all the thoughts of each group member involved in it. When uniting these thoughts, each member will know each other's thinking abilities.

In addition to sociomathematical norms, the success of a child's academic achievement can be caused by two types of factors, including external factors and internal factors [24]. External factors include factors from the environment in which the child learns, the methods used by the teacher when teaching, his school friends, and the support of his parents both materially and psychologically. While internal factors can come from within the child, for example, there is an intention to want to learn, there is a sense of wanting to compete positively with his friends in class, self-confidence to dare to try, interests and talents that have been embedded in the child, and even other factors. gender differences can also affect the success of academic achievement.

When socializing in the classroom, we can socialize with classmates and also teachers who teach. When we are in that class, we can find many differences in the characteristics that everyone has, ranging from physical differences, intelligence, ethnicity, religion, race, habits, the concept of friendship, even gender. All these types of differences can be brought together by the teacher in the classroom through group learning. When we talk about gender, what comes to our mind is only about gender, namely: male and female. In reality, the gender difference does not only talk about physical matters, but the psychology of the two sexes is also different. Physical differences are gender differences that are more clearly visible, male students tend to have big, tall, strong bodies, but the puberty phase is a little slower than female students. Meanwhile, female students tend to be small, weak, not too tall, but the puberty phase is faster than male students.

The differences between male and female students in learning mathematics among them (1) Men are superior in reasoning, women are superior in accuracy, thoroughness, and thoroughness of thought, and (2) Men have more mathematical and mechanical abilities than women, this difference is not visible at the elementary level but becomes more obvious at a higher level [25]–[28]. This is also supported by previous research, which results that the average percentage of male learning anxiety is 68% and female learning anxiety is 70.75% so that if you pay attention there is no significant difference in average [29]. This may occur because female students have a more open nature than boys, they can better admit their feelings of anxiety and are more critical in dealing with a problem. Female students are more careful in making decisions, they are afraid of making mistakes, therefore anxiety while studying will be easily seen in them.

Gender is related to human nature which by nature can change or be changed with human nature which is non-naturally immutable or permanent. As for the term gender, it can be interpreted as male and female which has become a decree. Gender equality simply distinguishes the definition of sex as biological sex from birth, namely male or female based on the genitals they have, while gender is social sex in the form of attributes masculine or feminine which is a socio-cultural construction [30], [31]. Gender, social, and cultural dimensions are very powerfully interacting in the conceptualization of mathematics education [32]–[34]. This was a previous study who explained that male students were more interested in mathematics than female students, so female students were more anxious in dealing with mathematics than male students [35]–[38], the women are generally better at memory and men are better at logical thinking [39]. Other than that the woman of the highest intelligence, but in essence, women have almost no more interest in theoretical questions such

as men, women are more interested in practical things than theoretical, women are also closer to concrete practical life problems, while men are more interested in abstract aspects [40], [41].

Studies related to sociomathematical norms have been carried out several times by previous researchers and experts. For example, the previous study conducted a mathematical belief of elementary school teachers which was reflected in decision making for learning mathematics, as well as contributing to creating sociomathematical norms [12], the identification of nine norms, including three social norms and six sociomathematical norms [42], the relationship between sociomathematical norms and visual media in mathematics learning [15], improvement of sociomathematical norm in mathematics learning using the Team Accelerated Instruction [43], factors that influence sociomathematical norm [44], and the opinion that students can build social norms when learning in class, such as: daring to express disagreement when needed, students can share their solutions with others, etc. [17]. The several studies that discuss the sociomathematical norms, none of them focus on research on sociomathematical norms in terms of student gender.

Based on these problems, it is very interesting to study learning that can help students analyze sociomathematical norms based on students' gender during this pandemic, therefore the purpose of this study is to analyze students' sociomathematical norms towards the formation of learning groups conducted by teachers, analyze the role of sociomathematical norms on students' social interactions when learning mathematics, analyze gender differences that can affect students' sociomathematical norms, and analyze sociomathematical norms in derivative material that is viewed from the gender aspect of SMAN 73 Jakarta students

**2. RESEARCH METHOD**

**2.1 Type of Research**

The type of approach used in this research is a qualitative approach. Meaning and understanding from within, reasoning, the definition of a certain situation, more research on things related to everyday life will be emphasized in qualitative research [45], [46]. While the type of research used in this research is descriptive with the case study method. According to Arikunto, descriptive research is research consisting of a collection of information about the status of an existing symptom, namely the state of the symptoms according to what they were at the time the research was conducted [47]–[49]. Data acquisition in descriptive research comes from interview scripts, field notes, photo, and video documentation, or other small notes that describe in detail and according to the reality in the field. The reason the researcher uses a qualitative approach with descriptive research is that this approach is wider in scope in revealing the facts that are happening when the research is taking place, where researchers can analyze sociomathematical norms with derived material in terms of gender aspects of Senior High School at 73 Jakarta.

**2.2 Participants**

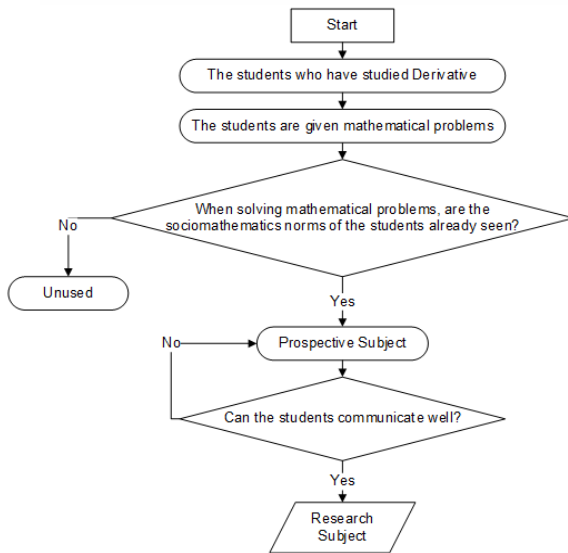


Diagram 1. Research Subject Selection Flow

*Title of manuscript is short and clear, implies research results (First Author)*

**Commented [A2]:** This study uses a sample of 9 students, but because this is a qualitative study, the sample size is quite representative for this case. The methodology section can be improved by (1) you need to provide information about what sampling method was used, (2) you need to provide detailed information on what data collection instrument was used, (3) you need to align your research question with the chosen methodology and approach what is the best answer to the research question, and (4) you need to correct spelling, grammar, and punctuation errors



The selection of research subjects begins with the observation process for two meetings. Based on the results of observations that have been made, nine students have been obtained consisting of five female students and four male students. The selection of 9 students with 5 female students who were used as research subjects was carried out purposively by considering the communication skills of students and researchers, this was intended so that communication between subjects and researchers was not hampered. the next stage is to communicate with the teacher about the sociomathematical norms on the research subject. research subjects who appear to have sociomathematical norms can be used as research subjects, to help researchers analyze sociomathematical norms in terms of students' gender aspects. The flow of research subject selection can be described more directed in Figure 1.

## 2.2 Data Collection Technique

The data collection techniques used in this research are observation, interview, documentation, and triangulation. Observation with the help of observation will be filled in by the researcher during the process of observing mathematics learning between teachers and students. This observation sheet is to find out how big the sociomathematical norms that students have are by reviewing them based on the gender aspect of the derived material. This observation sheet only contains yes or no choices, according to the observations obtained. The interviews conducted in this study were semi-structured. Semi-structured interviews are interviews that are included in the in-depth interview category, whose implementation is freer than structured interviews [47]–[51]. Interviews were conducted online through digital media such as google meetings on randomly selected subjects, which were about 9 students. Interviews were conducted by researchers to respondents through *google meetings* by activating the previous recording mode on the application, which is useful as an accurate and reliable research instrument. Documentation is used as evidence of classroom action research in the form of photos and videos taken by mathematics learning activities on derived material carried out at the time of the research. Documentation can also be used as data and information on research activities. Triangulation is a data collection technique that combines various data collection techniques and existing data sources [52]–[54]. If the researcher collects data by triangulation, then the researcher collects data which at the same time tests the credibility of the data, namely checking the credibility of the data with various data collection techniques and various data sources.

## 2.3 Technique of Data Analysis

Data analysis is the process of systematically searching and compiling data obtained from interviews, field notes, and other materials so that the results can be easily understood, and the findings can be informed to others [45], [46], [55]. Data analysis activities as used include three elements, namely: data reduction, data presentation, and concluding. On reduction data activities, all the data obtained were then selected based on the need to answer questions posed by researchers regarding socio-mathematical norms in terms of student gender. The researcher will write down the data obtained from the interviews by playing repeatedly the recordings that have been made during the interview process with the respondents. the next step is to present the data or data display. Presentation of data can make it easier for researchers to see the picture as a whole or part of the research. The presentation of the data in this study will describe in general the results of the study starting from the location and time of the study, how sociomathematical norms occur between male students and female students, as well as the results of interviews that have been conducted through google meetings with respondents. The final activities in data analysis techniques are verification. This activity is carried out conclusion drawing and verification is the third part and is an important element in data analysis techniques in qualitative research, namely conducting continuous verification throughout the research process. The initial conclusions put forward are still temporary and will change if no strong and supporting evidence is found at the next stage of data collection [45], [56]. It is different if the conclusions that have been obtained are accompanied by valid evidence and consistent with the situation when the researcher returned to the field to collect data, then the conclusions put forward are reliable. Conclusions can be in the form of a description or description of an object that was previously still gray or even dark so that after the data is examined the results will become clear.

## 3. Result and discussion

### 3.1. Result

#### Indicators of Sociomathematics Norms

Every norm that applies in society, must have a meaning that is not much different. However, there are still some differences between social norms and sociomathematical norms. Previous research confirms the difference between social norms and sociomathematical norms [3], [15], [44]. Table 1 is a difference between social norms and sociomathematical norms:

**Commented [A3]:** Your results section needs to include (1) Whether you have answered your research questions and why?, (2) you need to discuss whether you can generalize from your results, and (3) You also need to correct all grammar, spelling, and punctuation errors

**Commented [A4]:** you need to compare this indicator with the indicator from widodo, S.A (2019; 2020) that you have quoted. there seems to be a significant difference. so that by comparing your indicators with those of Widodo, you can see the novelty.

Table 1. Difference between Social Norms and Sociomathematical Norms

Social Norms	Sociomathematical Norms
Students ask each other about each other's thoughts	Students ask each other questions that emphasize mathematical reasoning, justification, and understanding.
Students explain how they think.	Students explain their solutions using mathematical arguments.
Students work together to solve problems.	Students reach an agreement using mathematical reasoning and proof.
Students solve problems using a variety of approaches.	Students compare their strategies to find mathematically important similarities and differences.
Students realize that making mistakes is part of learning.	Students use errors as opportunities to rethink concepts from mathematical ideas they have and test contradictions. Mistakes support new learning about math.

Social norms are general rules that we usually find in everyday life in social interaction in society [57], [58]. Meanwhile, sociomathematical norms are general rules in social interactions related to learning mathematics [15], [44]. Examples of the application of social norms, namely how to have a good opinion in public, how to respect the opinions of others, maintain peace when expressing opinions, and there is no element of coercion to support the opinions expressed. While examples of the application of sociomathematical norms, namely how to unite the concepts of mathematical thinking, how to decide on effective mathematical problem solving, and how to ensure the truth of the mathematical solutions that have been written. Sociomathematical norms are related to students' beliefs and beliefs about collaborative activities in learning mathematics [59], [60]. The collaboration referred to here is that in sociomathematical norms it is closely related to the process of interaction between students which has two important indicators, namely communication skills and students' social skills to achieve an understanding. The National Council of Teachers of Mathematics (NCTM) through the Principles and Standards for School Mathematics, places communication as an important part of mathematics and mathematics education [61]–[64]. The role of communication in learning mathematics is very important because communication is the only way for students to unite all their understanding. However, not only being able to communicate, but students must also have good social skills, if they can communicate well but the delivery method is not good, the communication process also cannot go as planned. So that researchers can analyze the sociomathematical norms that students have when learning mathematics takes place. the indicators of sociomathematical norms used in this study can be seen in table 2. This indicator is obtained by inferring from the opinions that have been written in the previous section.

Table 2. Indicator of Sociomathematical Norms

Indicator	Description
Acceptable Explanations (AE)	Cases where a teacher or student asks to make a reference, how a particular problem is considered acceptable
Mathematical Difference (MD)	Cases where a teacher or student questions or explains how another student's mathematical ideas differ from others
Mathematics Effectiveness (ME)	Cases where a teacher or student questions which problem-solving strategy (mostly proposed by teachers) is the most effective or easiest to implement for students
Mathematics Insight (MI)	Cases where higher-level mathematical justification is achieved through the interaction of insights as well as discussion of mathematical topics presented by teachers or students

Based on the indicators in Table 2, it can implicitly indicate the occurrence of social interaction. Sociomathematical norms possessed by students can be seen based on how students receive material delivered by the teacher, then how the attitudes shown by students when they see differences in mathematical thinking, followed by how to solve problems chosen by students, whether the more effective way or not. The normal way that is taught by the teacher, the last is how the insight of mathematical knowledge possessed by students.

#### Data Collection

The data collection was carried out through the observation process and continued with the interview process. The observation process was carried out to seven classes of students twice, through online learning

with google meetings. After the observation process was completed, the researcher selected seven samples of students who would be interviewed related to sociomathematical norms. Presentation of data in this study using MAXQDA 2020 software. MAXQDA is software for analyzing combined and qualitative data. This software is a global program for analyzing unstructured data such as interviews, articles, media, surveys, tweets, and more. This MAXQDA software can assist researchers in analyzing the results of interviews that have been conducted with informants.

The first indicator in this study is Acceptable Explanation (AE), the purpose of this indicator is the case where a teacher or student asks to make a reference, how a particular problem is considered acceptable. The presentation of the data is presented in the form of a diagram which can be seen in Figure 2.

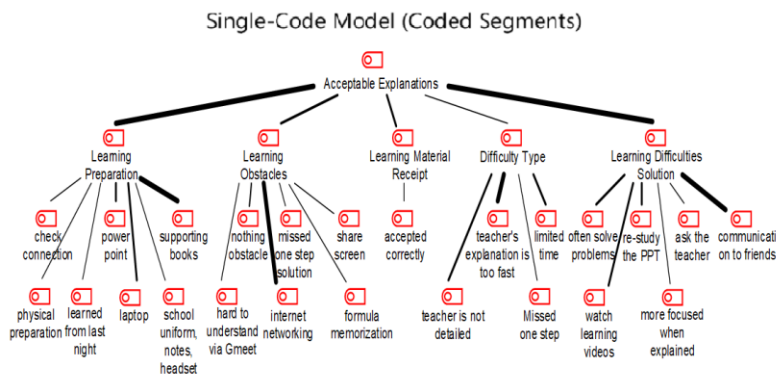


Figure 2. Interview Results on the First Indicator

Based on Figure 2, it can be seen that this indicator is given five questions with keywords: preparation for learning, learning obstacles, results of receiving material, types of difficulties when studying, and solutions made to deal with these difficulties. When the researcher questions about the preparation for learning, we can see that the thickest line shows that the learning support books, laptops, and power points that will be explained by the teacher on that day are the things they prepare before studying. For problems when learning, most of the resource persons answered problems on the internet network. Given that learning is still using the Distance Learning (PJJ) system, the use of the internet may also be an obstacle when studying, because sometimes there are students who suddenly lose their network, leave the google meeting, or find it difficult to join the google meeting, not to mention there are students who are constrained by the study quota. The transcript of the interview conducted with one of the subjects is as follows:

*P : Okay, so during the PJJ process, are there any obstacles that you face? Please state what kind of problem?*

*S2 : Sometimes the network is disrupted, ma'am, then the explanation from the teacher is not very clear*

*P : Oh, the explanation is too fast, isn't it?*

*S2 : Yes right ma'am*

In the next question, regarding the results of receiving the material provided by the teacher, all resource persons can accept it easily, so that learning can run smoothly. For the next question related to the types of difficulties faced by the resource persons when studying, we can see for the thickest line, the informant said that the teacher's explanation was too fast, this was due to ineffective learning time. So, in the end, the teacher was too hasty in explaining, as a result, some of the informants felt uncomfortable with this way of learning. In the last question, which was about the solutions that were made to overcome the difficulties felt when learning mathematics, most of the informants thought that they should communicate with their friends. So if there are resource persons who are left behind by a few steps of explanation from the teacher when in a google meeting, they act more to communicate with their friends who understand more, rather than having to ask the teacher directly.

The second indicator in this study is a mathematical difference (MD), which is a case where a teacher or student questions or explains how other students' mathematical ideas differ from others. The presentation of the data is presented in the form of a diagram which can be seen in Figure 3.

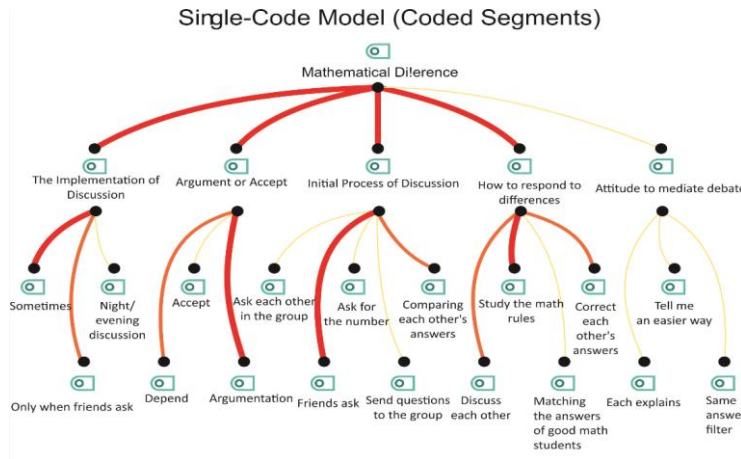


Figure 3. Interview Results on the Second Indicator

Commented [A5]: consistency in image display

Based on the results of interviews guided by the second indicator in sociomathematical norms, it can be seen that there are five questions posed to the informants with the keywords: implementation of discussion, argumentation or acceptance, the initial process of discussion, how to respond to differences, and attitude to mediate debates. When the researcher questions about the implementation of the discussion, based on the diagram shows the thickest line meaning that the implementation of the discussion is sometimes carried out by students, so it is not always scheduled to have a discussion. Only at certain moments when someone doesn't understand the material. Then in the next question, the researcher asked about the level of frequency of the informants while discussing it in arguing against the opinions of other friends or just accepting the opinions of other friends. Most of the interviewees argued that they often argued or acted against other opinions, rather than having to accept or be pro. This statement is supported by the following interview excerpt:

- P : *Oh okay, so you are more often in the Whatsapp Group, huh. Then usually during the discussion, do you often argue with other friends? Or just accept other opinions?*
- S8 : *I'm the type of person who doesn't accept it, so I keep arguing with others until I find a clear point*
- P : *Good, I know how come you are hehe so you keep arguing until you find the right one, right?*
- S8 : *Yes that's right ma'am*

In the next question, regarding the initial process of discussion can occur. Based on the diagram, the thickest line is when a friend asks a question. So the discussion that is usually carried out by the resource person often occurs when a friend asks the resource person about the material that has not been understood on that day, then the discussion process will occur. The next question is about how to respond to differences of opinion. Based on the diagram above, most of the students indicated that the way to respond to differences of opinion that was often done by the resource persons was to examine each other's applicable mathematical rules. So, when the discussion process occurs and their answers are different, they will be guided by the applicable mathematical rules which in the end they will correct each other's answers. Then proceed with the last question on this second indicator, the question asked is related to the attitude taken by the resource person when mediating a debate. Based on the diagram above, there are three alternative answers obtained. So the attitude that is usually done by the resource person when mediating a debate is by allowing each of them to explain the answer he got, then some tell the easier way to solve the problem, and there is also an interesting answer obtained same.

The third indicator in this study is Mathematics Effectiveness (ME), which is a case where a teacher or student questions the problem-solving strategy (mostly proposed by the teacher) which is the most effective or easiest to implement for students. The presentation of the data is presented in the form of a diagram which can be seen in Figure 4.

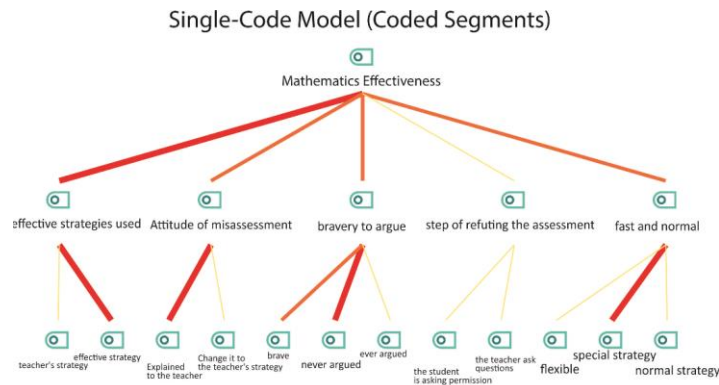


Figure 4. Interview Results on the Third Indicator.

Based on the results of interviews based on the third indicator, it can be seen that there are five questions asked by the researcher, with the keywords: the use of effective methods, attitudes of judgmental errors, courage to argue, stages of refuting the assessment, and preferring the fast way or the normal way. Sourced from the first question asked regarding the use of a more effective method, it can be seen in the thicker line that students prefer to use a more effective method because its use can shorten the time, can minimize errors, and also does not need more paper much to write the answer. The next question posed by the researcher, which relates to the way students behave when the teacher makes a mistake in assigning value to the work done. Most students will explain to the teacher in a kind and polite manner that the method used is indeed different, but the result is the same as the method produced by the teacher.

The next question is related to the courage of students in submitting opinions. When the informants were asked questions about whether or not they had an opinion when learning mathematics took place. Some students answered that they had never had an opinion because they were afraid of the teacher, afraid of having the wrong opinion, some even had not thought of a topic for their opinion. The last question is a question related to choosing the fast way or the normal way when solving a problem given by the teacher. There are three alternative answers given by the informants. Some of them are more flexible, some prefer the fast way, and some even choose the normal way. Based on the thickest line in the diagram, showing the answer that was chosen the most by the interviewees is the quickest way. The reason the informants chose to use the fast method was that it shortened the time, minimized errors, and was shorter in writing the answers they received. This statement is supported by the following interview excerpt:

*P : Ah yes, that's good, so it's a comparison. Now, for example, the way you wrote is different from what Mrs. Lasma taught, the answer is also according to Mrs. Lasma, but your way is to blame. You dare not tell Mrs. Lasma about the truth?*

*S4 : I'm really brave, ma'am, as long as I speak politely and I can explain how.*

*P : The important thing is that you have proof, right?*

*S4 : Yes, ma'am, I have evidence. So, how do I reduce that risk, I wrote it in two ways, ma'am hehe.*

The fourth indicator which is the last indicator in this research is Mathematics Insight (MI), which is a case where higher-level mathematical justification is achieved through the interaction of insights and discussions on mathematical topics presented by the teacher or students. The presentation of the data is presented in the form of a diagram which can be seen in Figure 5.

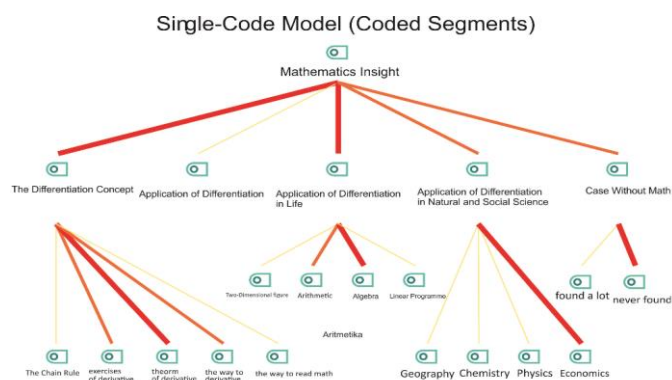


Figure 5. Interview Results on the Fourth Indicator

Based on the results of the interviews submitted, there were five questions asked regarding this fourth indicator, including derived concepts that have been studied, the application of derived concepts in everyday life, the application of mathematical material in everyday life, the application of mathematics in the field of science. Others, as well as cases that cannot be solved using mathematics. In the first question posed, namely regarding the concept of derivatives that have been studied, there are five alternative answers given by the resource persons, including chain rules, derivative questions, derivative properties, how to derive a function, and how to read mathematical language. We can see that the thickest line in the diagram shown is a derivative. When the researcher asked about the concept of derivatives that had been studied, most of the respondents answered that they had studied the properties of derivatives.

In the next question posed by the researcher regarding the application of the concept of derivatives in everyday life. However, none of the informants could answer this question. It is estimated that teachers who teach are less informed about the application of derived concepts that have been learned in everyday life. For the third question posed by the researcher, namely regarding the application of mathematical material that has been learned from the beginning of school or since elementary school until now. There are four alternative answers given, including flat shapes, arithmetic, algebra, and linear programming. When viewed from the diagram shown, the thickest line is arithmetic, which is the material often used by humans in carrying out transactions or other basic calculations. This statement is supported by the following interview excerpt:

*P : So while you have studied mathematics from elementary school until now, what mathematics material have you applied in your daily life?*

*S7 : Arithmetic is the best, ma'am because mathematics is the most important thing, it's the basic knowledge, ma'am, like adding, lacking, dividing, this time is really important in our daily application. Like, for example, if you want to go shopping, you need to use those basic operations*

The next question posed by the researcher to the resource person was regarding the application of mathematics in other fields of science. There are four alternative answers given, including geography, chemistry, physics, and economics. Based on the table and diagram above, shows that the thickest line is economic. This means that more resource persons apply mathematics to the field of economics. The last question asked by the researcher to the informant was about finding cases in everyday life that could not be solved by mathematics. There are two alternative answers given by the resource persons, namely, there are no cases that cannot be solved without mathematics and there are cases that cannot be solved without mathematics. The two alternative answers, the thickest line shown is that there are no cases that cannot be solved without mathematics.

### 3.2. Discussion

In the first indicator, the third question is related to the results of receiving material during online learning, namely receiving well. Even though the network was constrained, the resource persons were still able to receive explanations from the teacher well and were easy to understand because when online learning took place, the teacher explained patiently. In the first indicator, the fourth question related to learning difficulties most frequently faced by resource persons is the teacher's explanation that is too fast. This learning difficulty is also supported by the results of previous research which states that students consider the use of PowerPoint

media, learning videos in online learning to explain too quickly so that the material presented is poorly understood and poorly understood [65]–[69]. If the researcher pays attention when the research observation process takes place, actually the teacher is not too fast when explaining, but only limited time is a problem because each room meeting is only given 45 minutes for the teacher to explain.

In the first indicator, the fifth question related to solutions that were carried out to overcome the learning obstacles faced, the answer that was expressed the most by the resource persons was communication to friends. Regarding mathematical communication, this is considered as to how teachers and students can share the processes of learning, understanding, and doing mathematics [70], [71]. When resource persons are constrained or have difficulties during online learning, they immediately communicate with their friends, if their friends have not been able to solve the problem then they will ask the teacher about the material that has been missed or poorly understood. Based on the results of interviews from all sources related to the first indicator, it can be concluded that in this indicator male students are superior in sociomathematical norms.

In the second indicator, the first question is the code that is most interested in the resource persons regarding the intensity of the discussion, which is sometimes a discussion. Based on the statement of the informants, sometimes they do discussions when there is a material problem that they don't understand, so they don't always carry out discussions. In the next question related to arguing more often or just accepting friends' answers, the code that is most in demand is argumentation. This is by which states that in learning mathematics students need to be accustomed to providing arguments for each answer and responding to answers given by others so that what is learned becomes more meaningful for students [70]–[73]. Some of the interviewees argued more often because they wanted to practice how to defend their opinions.

In the next question related to how to respond to differences of opinion, the code that was chosen by the speakers was the study of mathematical rules. Based on the results of interviews related to this question, some of the interviewees argued that when the interviewee was dealing with some of his friends who had different opinions about how to solve a problem, the attitude he showed was to examine the applicable mathematical rules to determine the right answer. This statement is in line with previous research which states that students must be able to combine all the concepts they already know and which are related to the problem, then form new concepts so that the given problem can be solved [61], [74]–[76].

In the first three indicators, the code that is most in demand by resource persons related to how to solve a problem is the use of the effective method (K2). Based on the results of interviews with informants, when researchers asked questions about their interest in solving a problem, some of them answered using a more effective way than the method taught by the teacher with reasons that were shorter in writing and could minimize errors. Following this, the selection of this strategy is generally adjusted to the problem posed, in other cases, this method cannot be used [77], [78]. In essence, a more effective way is good, but not all mathematical problems can use a more effective way.

In the next question related to the courage to have an opinion when online learning takes place, the code that is mostly expressed by the speakers is that they have never had an opinion. Based on the results of interviews that have been conducted, the majority of the interviewees have never expressed their opinion when online learning takes place, for reasons of fear of being wrong, afraid of just wasting time, and some even think that they have never thought of expressing their opinion in front of everyone. This is following the statement in previous research which says that often teachers only use the lecture method interspersed with questions and answers, assignments, and discussions that are less directed in learning resulting in students being less active [77], [78]. The implementation of a lecture method like this will certainly make students lazy to express their opinions.

In the fourth indicator with the main code mathematics insight, the researcher asks questions about the application of the material in everyday life, there are four sub-codes proposed by the resource persons. The code most chosen by the resource person is Algebra material. Algebra was the most chosen by the resource persons because this material is a basic mathematical concept, which includes basic arithmetic operations such as addition, subtraction, multiplication, and division which are commonly used when transacting in everyday life. This intersects with the high school level the difficulties that are often encountered are in materials related to algebra and its application [79]. If traced back, in this study the material that is often applied in everyday life is algebra, so this material should not be so difficult in its daily application.

The next question is related to the application of mathematical material that can be used in other fields of science. Based on the results of interviews that have been conducted, there are four subcodes including physics, chemistry, geography, and economics. The sub-code that is most in demand by resource persons in the field of economics. The economic field is commonly used to calculate interest rates, per capita income, population, and even national income. This is in line with previous research which stated that many applications of Mathematics were developed into economics through logical reasoning, for example, the application of mathematics regarding linear functions on demand and supply functions and market equilibrium in economics



[79]. This statement means that mathematics has a fairly close relationship with economics. The reason is that some of the material sub-chapters from economics use mathematical calculations

#### 4. Conclusion

After observing, interviewing, documenting, and analyzing using MAXQDA 2020 software to assist in conducting the analysis, it was found that (1) The role of sociomathematical norms on students' social interactions is by applying sociomathematical norms students become more aware of the rules that apply during the mathematics learning process take place. (2) Online learning using Google Meet affects the superiority of male students in sociomathematical norms, compared to female students. of the four indicators of sociomathematical norms, three of them stated that male students were superior in their abilities in sociomathematical norms, only Mathematics Effectiveness was superior for female students. In this regard, gender differences, in general, can affect the sociomathematical norms that students have

Based on the conclusions described previously, it is hoped that (1) Students must be accustomed to having the courage to argue or argue when there is a problem, but still using good ethics and not hurting the feelings of others dare to argue or argue can train students' thinking skills when speaking in public. (2) Parents must participate in supervising students' learning from home so that they are eager to participate in every activity in learning even though they are brave. (3) Learning mathematics during the Covid-19 pandemic should be done well and interestingly, considering that learning is only through courage, so it is possible for students to feel bored quickly if the learning system only begins with an explanation of the material and ends with giving assignments, then up repeatedly.

#### REFERENCES

- [1] N. R. Schultz, M. M. Silvestri, and C. J. Correia, "Diversion of prescription stimulants among college students: An initial investigation of injunctive norms," *Addict. Behav.*, vol. 65, pp. 264–268, 2017.
- [2] D. Papineau, "There are no norms of belief," *aim belief*, pp. 64–79, 2013.
- [3] E. Yackel and P. Cobb, "Sociomathematical Norms, Argumentation, and Autonomy in Mathematics," *J. Res. Math. Educ.*, vol. 27, no. 4, pp. 458–477, 1996.
- [4] E. Yackel, P. Cobb, and T. Wood, "Small-Group Interactions As A Source Of Learning Opportunities In Second-Grade Mathematics," *J. Res. Math. Educ.*, vol. 22, no. 5, pp. 390–408, 1991.
- [5] T. Wedege, "Sociomathematics : a Subject Field and a Research Field," in *Proceedings of the sixth international Mathematics Education and Society conference*, 2010.
- [6] T. Wedege, "People's Mathematics in Working Life: Why Is It Invisible?," *Adults Learn. Math.*, vol. 5, no. 1, pp. 89–97, 2010.
- [7] T. Wedege, "The problem field of adults learning mathematics," in *International Conference of Adults Learning Mathematics (ALM), London, UK (2009)*, 2010, pp. 13–24.
- [8] T. Wedege and J. Evans, "Adults' resistance to learning in school versus adults' competences in work: The case of Mathematics," *Adults Learn. Math. Int. J.*, vol. 1, no. 2, pp. 28–43, 2006.
- [9] A. Çakır and H. Akkoç, "Examining socio-mathematical norms related to problem posing: a case of a gifted and talented mathematics classroom," *Educ. Stud. Math.*, vol. 105, no. 1, pp. 19–34, 2020.
- [10] H. Straehler-Pohl, S. Fernández, U. Gellert, and L. Figueiras, "School mathematics registers in a context of low academic expectations," *Educ. Stud. Math.*, vol. 85, no. 2, pp. 175–199, 2014.
- [11] J. Skott, "Towards a participatory approach to 'beliefs' in mathematics education," in *From beliefs to dynamic affect systems in mathematics education*, Springer, 2015, pp. 3–23.
- [12] S. M. Kang and M. K. Kim, "Sociomathematical norms and the teacher's mathematical belief: A case study from a Korean in-service elementary teacher," *Eurasia J. Math. Sci. Technol. Educ.*, vol. 12, no. 10, 2016, doi: 10.12973/eurasia.2016.1308a.
- [13] N. D. Güven and Y. Dede, "Examining social and sociomathematical norms in different classroom microcultures: Mathematics teacher education perspective," *Kuram ve Uygulamada Egit. Bilim.*, vol. 17, no. 1, 2017, doi: 10.12738/estp.2017.1.0383.
- [14] R. I. I. Putri, M. Dolk, and Zulkardi, "Professional development of PMRI teachers for introducing social norms," *J. Math. Educ.*, vol. 6, no. 1, pp. 11–19, 2015, doi: 10.22342/jme.6.1.1900.11-19.
- [15] S. A. Widodo, J. A. Dahlan, and Turmudi, "Can Sociomathematical Norms Be Developed With Learning Media?," *J. Phys. Conf. Ser.*, vol. 1315, no. 1, 2019, doi: 10.1088/1742-6596/1315/1/012005.
- [16] Ö. Özyurt, H. Özyurt, A. Baki, and B. Güven, "Integration into mathematics classrooms of an adaptive and intelligent individualized e-learning environment: Implementation and evaluation of UZWEBMAT," *Comput. Human Behav.*, vol. 29, no. 3, pp. 726–738, 2013, doi: 10.1016/j.chb.2012.11.013.
- [17] D. Akyüz, "Çember özelliklerini öğretmeyi amaçlayan teknoloji ve sorgulama tabanlı bir sınıfta oluşan sosyomatematikselsel normların incelenmesi," *Eğitim ve Bilim*, vol. 39, no. 175, 2014.
- [18] G. Akin and D. Akyüz, "İlköğretim Matematik Öğretmen Adaylarının Sosyomatematikselsel Norm Alguları," in *İltercongress*, 2018, no. September, pp. 343–347.
- [19] V. Sánchez and M. García, "Sociomathematical and mathematical norms related to definition in pre-service primary teachers' discourse," *Educ. Stud. Math.*, vol. 85, no. 2, pp. 305–320, 2014.
- [20] D. Sommerhoff and S. Ufer, "Acceptance criteria for validating mathematical proofs used by school students, university students, and mathematicians in the context of teaching," *Zdm*, vol. 51, no. 5, pp. 717–730, 2019.

*Title of manuscript is short and clear, implies research results (First Author)*

**Commented [A6]:** Your conclusion would be improved by the following (1) In your conclusion you need to include the newly formulated theoretical contributions, (2) also, you need to list any limitations of the study and any prospects for future research, and (3) You also need to include a summary of the key results in a compact form and re-emphasize their significance



- [21] R. A. Apsari, S. Sripatmi, R. I. I. Putri, L. Hayati, and S. Sariyasa, "From Less to More Sophisticated Solutions: A Sociomathematical Norms to Develop Students' Self-Efficacy," 2020, doi: 10.2991/assehr.k.200827.072.
- [22] A. M. Partanen and R. Kaasila, "Sociomathematical Norms Negotiated in the Discussions of Two Small Groups Investigating Calculus," *Int. J. Sci. Math. Educ.*, vol. 13, no. 4, pp. 927–946, 2015.
- [23] Kadir, "Kemampuan Komunikasi Matematik Dan Keterampilan Sosial Siswa Dalam Pembelajaran Matematika," in *Seminar Nasional Matematika dan Pendidikan Matematika*, 2008, pp. 339–350.
- [24] G. T. L. Brown, E. R. Peterson, and E. S. Yao, "Student conceptions of feedback: Impact on self-regulation, self-efficacy, and academic achievement," *Br. J. Educ. Psychol.*, vol. 86, no. 4, pp. 606–629, 2016.
- [25] D. Sulfikawati, S. Suharto, and D. Kurniati, "Analisis Norma Sosiomatematik dalam Pembelajaran Kolaboratif Pokok Bahasan Segitiga dan Segiempat di Kelas VII-C SMP Negeri 11 Jember," *J. Edukasi*, vol. 3, no. 3, pp. 1–4, 2016.
- [26] B. Mainali, "Investigating the Relationships between Preferences, Gender, Task Difficulty, and High School Students' Geometry Performance," *Int. J. Res. Educ. Sci.*, vol. 5, no. 1, pp. 224–236, 2019.
- [27] A. A. Adeyemi and O. M. Adeniyi, "A study of gender differences in the attitude of mathematically gifted and non-gifted senior secondary school students in Nigeria," *Gen. Behav.*, vol. 8, no. 2, pp. 3102–3116, 2010.
- [28] M. T. Battista, "Spatial visualization and gender differences in high school geometry," *J. Res. Math. Educ.*, vol. 21, no. 1, pp. 47–60, 1990.
- [29] S. Imro'ah, W. Winarso, and E. P. Baskoro, "Analisis Gender Terhadap Kecemasan Matematika Dan Self Efficacy Siswa," *Kalamatika J. Pendidik. Mat.*, vol. 4, no. 1, pp. 23–36, 2019.
- [30] P. G. Yanti and U. Qura, "Gender Inequalities and Emancipation Struggle In the Novel *Isinga*," in *Proceeding 12th ADRI 2017 International Multidisciplinary Conference*, 2017, p. 159.
- [31] C. Mazzuca, A. Majid, L. Lugli, R. Nicoletti, and A. M. Borghi, "Gender is a multifaceted concept: evidence that specific life experiences differentially shape the concept of gender," *Lang. Cogn.*, vol. 12, no. 4, pp. 649–678, 2020.
- [32] S. Rambatmojo, T. A. Kusmayadi, and R. Riyadi, "Profile of visual-spatial intelligence in solving geometric of 11th grades viewed from gender differences," in *International Journal of Science and Applied Science: Conference Series*, 2017, vol. 2, no. 1, pp. 346–353.
- [33] R. RAMADHANĪ, H. Syamsul, and U. Rofiqul, "Problem-Based Learning, Its Usability and Critical View as Educational Learning Tools," *J. Gift. Educ. Creat.*, vol. 6, no. 3, pp. 193–208, 2019.
- [34] R. Purwasih, I. W. Anita, and M. Afrilianto, "Junior high school students' mathematical creative thinking ability based on gender differences in plane and solid geometry subjects," in *Journal of Physics: Conference Series*, 2019, vol. 1315, no. 1, p. 12073.
- [35] Z. A. Mz, "Perspektif gender dalam pembelajaran matematika," *Marwah J. Perempuan, Agama Dan Jender*, vol. 12, no. 1, pp. 15–31, 2013.
- [36] J. S. Eccles and M.-T. Wang, "What motivates females and males to pursue careers in mathematics and science?," *Int. J. Behav. Dev.*, vol. 40, no. 2, pp. 100–106, 2016.
- [37] M. Puteh and S. Z. Khalin, "Mathematics anxiety and its relationship with the achievement of secondary students in Malaysia," *Int. J. Soc. Sci. Humanit.*, vol. 6, no. 2, p. 119, 2016.
- [38] D. Putwain and A. L. Daly, "Test anxiety prevalence and gender differences in a sample of English secondary school students," *Educ. Stud.*, vol. 40, no. 5, pp. 554–570, 2014.
- [39] S. Zubaidah, N. M. Fuad, S. Mahanal, and E. Suarsini, "Improving creative thinking skills of students through differentiated science inquiry integrated with mind map," *J. Turkish Sci. Educ.*, vol. 14, no. 4, pp. 77–91, 2017.
- [40] R. Triyadi, "Kemampuan matematis ditinjau dari perbedaan gender." Universitas Pendidikan Indonesia, 2013.
- [41] P. Firmanti, "Penalaran Siswa Laki-laki dan Perempuan dalam Proses Pembelajaran Matematika," *HUMANISMA J. Gen. Stud.*, vol. 1, no. 2, pp. 73–85, 2018.
- [42] K. Tatsis, "Investigating the influence of social and sociomathematical norms in collaborative problem solving," *Cerme 5*, vol. 5, pp. 1321–1330, 2007.
- [43] S. A. Widodo and A. S. Purnami, "Mengembangkan Norma Sosiomatematik dengan Team Accelerated Instruction," *Numer. J. Mat. dan Pendidik. Mat.*, vol. 2, no. 1, pp. 29–48, 2018, doi: 10.25217/numerical.v2i1.238.
- [44] S. A. Widodo, J. A. Dahlan, E. Harini, and F. Sulistyowati, "Confirmatory factor analysis sociomathematics norm among junior high school student," *Int. J. Eval. Res. Educ.*, vol. 9, no. 2, pp. 448–455, 2020, doi: 10.11591/ijere.v9i2.20445.
- [45] J. R. Fraenkel, N. E. Wallen, and H. H. Hyun, *How to Design and Evaluate Research in Education*. New York.: McGraw-Hill Companies, 2012.
- [46] J. W. Creswell, *Research Design Qualitative, Quantitative, and Mixed Second Edition*. Sage Publication, 2012.
- [47] L. Doyle, C. McCabe, B. Keogh, A. Brady, and M. McCann, "An overview of the qualitative descriptive design within nursing research," *J. Res. Nurs.*, vol. 25, no. 5, pp. 443–455, 2020.
- [48] V. A. Lambert and C. E. Lambert, "Qualitative descriptive research: An acceptable design," *Pacific Rim Int. J. Nurs. Res.*, vol. 16, no. 4, pp. 255–256, 2012.
- [49] H. Nassaji, "Qualitative and descriptive research: Data type versus data analysis." Sage Publications Sage UK: London, England, 2015.
- [50] H. Kallio, A. Pietilä, M. Johnson, and M. Kangasniemi, "Systematic methodological review: developing a framework for a qualitative semi-structured interview guide," *J. Adv. Nurs.*, vol. 72, no. 12, pp. 2954–2965, 2016.

- [51] S. E. Rabionet, "How I learned to design and conduct semi-structured interviews: an ongoing and continuous journey.," *Qual. Rep.*, vol. 16, no. 2, pp. 563–566, 2011.
- [52] N. Carter, D. Bryant-Lukosius, A. Dicenso, J. Blythe, and A. J. Neville, "The use of triangulation in qualitative research," *Oncol. Nurs. Forum*, vol. 41, no. 5, pp. 545–547, 2014, doi: 10.1188/14.ONF.545-547.
- [53] L. A. Guion, D. C. Diehl, and D. McDonald, "Triangulation: Establishing the validity of qualitative studies," *Edis*, vol. 2011, no. 8, p. 3, 2011.
- [54] R. S. Natow, "The use of triangulation in qualitative studies employing elite interviews," *Qual. Res.*, vol. 20, no. 2, pp. 160–173, 2020.
- [55] J. W. Creswell, *Educational Research: Planning, Conducting and Evaluating Quantitative and Qualitative Research*. London: Pearson, 2012.
- [56] M. B. Miles, M. A. Huberman, and J. Saldaña, *Qualitative Data Analysis*. Los Angeles: Sage Publications, 2013.
- [57] J. B. Bayer, N. B. Ellison, S. Y. Schoenebeck, and E. B. Falk, "Sharing the small moments: ephemeral social interaction on Snapchat," *Information, Commun. Soc.*, vol. 19, no. 7, pp. 956–977, 2016.
- [58] C. Calhoun, "Indirect relationships and imagined communities: large-scale social integration and the transformation of everyday life," in *Social theory for a changing society*, Routledge, 2019, pp. 95–130.
- [59] S. Kafoussi, P. Chaviaris, and R. Dekker, "Factors that influence the development of students' regulating activities as they collaborate in mathematics," *Int. J. Math. Educ.*, vol. 2, pp. 46–74, 2010.
- [60] P. Chaviaris and S. Kafoussi, "Developing students' collaboration in a mathematics classroom through dramatic activities," *Int. Electron. J. Math. Educ.*, vol. 5, no. 2, pp. 91–110, 2010.
- [61] S. A. Widodo, Istiqomah, Leonard, A. Nayazik, and R. C. I. Prahmana, "Formal student thinking in mathematical problem-solving," *J. Phys. Conf. Ser.*, vol. 1188, p. 012087, 2019, doi: 10.1088/1742-6596/1188/1/012087.
- [62] S. A. Widodo, I. Ibrahim, W. Hidayat, S. Maarif, and F. Sulistyowati, "Development of Mathematical Problem Solving Tests on Geometry for Junior High School Students," *J. Elem.*, vol. 7, no. 1, pp. 221–231, 2021, doi: 10.29408/jel.v7i1.2973.
- [63] National of Council Teacher of Mathematics, *Curriculum and Evaluation Standards for School Mathematics*. Reston: NCTM, 2000.
- [64] K. W. Kosko and Y. Gao, "Mathematical Communication in State Standards Before the Common Core," *Educ. Policy*, 2017, doi: 10.1177/0895904815595723.
- [65] R. E. Mayer, J. Heiser, and S. Lonn, "Cognitive constraints on multimedia learning: When presenting more material results in less understanding.," *J. Educ. Psychol.*, vol. 93, no. 1, p. 187, 2001.
- [66] M. Nordmark, "Writing roles: A model for understanding students' digital writing and the positions that they adopt as writers," *Comput. Compos.*, vol. 46, pp. 56–71, 2017.
- [67] N. Hara, "Student distress in a web-based distance education course," *Information, Commun. Soc.*, vol. 3, no. 4, pp. 557–579, 2000.
- [68] S. Zheng, M. B. Rosson, P. C. Shih, and J. M. Carroll, "Understanding student motivation, behaviors and perceptions in MOOCs," in *Proceedings of the 18th ACM conference on computer supported cooperative work & social computing*, 2015, pp. 1882–1895.
- [69] J. M. Lodge, G. Kennedy, L. Lockyer, A. Arguel, and M. Pachman, "Understanding difficulties and resulting confusion in learning: an integrative review," in *Frontiers in Education*, 2018, vol. 3, p. 49.
- [70] D. Kaya and H. Aydin, "Elementary mathematics teachers' perceptions and lived experiences on mathematical communication," *Eurasia J. Math. Sci. Technol. Educ.*, vol. 12, no. 6, pp. 1619–1629, 2016.
- [71] G. M. Tinungki, "The Role of Cooperative Learning Type Team Assisted Individualization to Improve the Students' Mathematics Communication Ability in the Subject of Probability Theory.," *J. Educ. Pract.*, vol. 6, no. 32, pp. 27–31, 2015.
- [72] D. K. Pugalee, "Spotlight on the standards: Using communication to develop students' mathematical literacy," *Math. Teach. Middle Sch.*, vol. 6, no. 5, pp. 296–299, 2001.
- [73] D. K. Pugalee, "Writing, mathematics, and metacognition: Looking for connections through students' work in mathematical problem solving," *Sch. Sci. Math.*, vol. 101, no. 5, pp. 236–245, 2001.
- [74] S. A. Widodo *et al.*, "Process of algebra problem-solving in formal student," *J. Phys. Conf. Ser.*, vol. 1657, no. 1, 2020, doi: 10.1088/1742-6596/1657/1/012092.
- [75] S. A. S. A. Widodo, T. Turmudi, and J. A. J. A. Dahlan, "An Error Students In Mathematical Problems Solves Based On Cognitive Development," *Int. J. Sci. Technol. Res.*, vol. 8, no. 07, pp. 433–439, 2019.
- [76] S. A. Widodo, Darhim, and T. Ikhwanudin, "Improving mathematical problem solving skills through visual media Improving mathematical problem solving skills through visual media," *J. Phys. Conf. Ser.*, vol. 948, no. 1, pp. 1–6, 2018, doi: 10.1088/1742-6596/948/1/012004.
- [77] J. L. Schonberger and J.-M. Frahm, "Structure-from-motion revisited," in *Proceedings of the IEEE conference on computer vision and pattern recognition*, 2016, pp. 4104–4113.
- [78] A. Althubaiti, "Information bias in health research: definition, pitfalls, and adjustment methods," *J. Multidiscip. Healthc.*, vol. 9, p. 211, 2016.
- [79] A. N. Ariviana and H. Retnawati, "Constraints of high school mathematics teachers in teaching distance and angle material in three dimensions," in *Journal of Physics: Conference Series*, 2020, vol. 1511, no. 1, p. 12030.