

PAPER • OPEN ACCESS

Preface

To cite this article: 2021 *IOP Conf. Ser.: Earth Environ. Sci.* **819** 011001

View the [article online](#) for updates and enhancements.

You may also like

- [Preface](#)
- [PREFACE](#)
- [2019 9th International Conference on Future Environment and Energy](#)

2nd International Conference Earth Science and Energy (ICESE) 2020



2nd International Conference Earth Science and Energy (ICESE) 2020

We are glad to introduce you the proceedings of the first 2nd International Conference Earth Science and Energy (ICESE) 2020. The 2nd ICESE 2020 addresses challenges and innovations the field of Food Science, Earth Science, Environmental Science and Environmental Issue. It also provides a premier interdisciplinary platform for researchers, educators and practitioners to present and discuss the most recent innovations, trends, and concerns as well as practical challenges encountered and solutions adopted in the fields of science, Energy, Food Science, Forest Science and environmental issue related.

As we may aware, the World Health Organization officially declared the novel coronavirus COVID-19 a pandemic. Governments around the world are now issuing restrictions on travel, gatherings, and meetings in an effort to limit and slow the spread of the virus. The health and safety of the author and reseacher community is our first priority and we are supporting these efforts. Therefore, the ICESE 2020 conference was held virtually on 11 November 2020.

The ICESE conference is hosted by PT. Kresna Acitya Nusantara Mediatama and co-hosted by Universitas Muhammadiyah Sidoarjo, Relawan Jurnal Indonesia. This year, we held this flexible online conference to gather experts and scholars around the globe with the aim to continue disseminating the latest advanced research in the field of Food Science, Earth Science, Environmental Science and Environmental Issue. The conference was held from Yogyakarta as the host of the event. The ICESE 2020 event is virtually implemented with a model that all invited speakers are given time to present their material for about 30-45 minutes each. It then followed by a question and answer by the participants with a direct questioning system, through chat forums and Q&A forums provided by the zoom application. Overall, the conference took 6 hours.

The number of participants who joined the zoom room was recorded around 271 participants. The authors or participants are came from 5 countries, namely Indonesia, Malaysia, Brunei Darussalam, Philippine and India. Indonesian Participants are come from 19 Provinces of 33 Provinces.

The committee of the conference are honored to have invited following renowned experts as our keynote speakers. Prof. Dato' Dr. Kamaruzzaman Sopian from Universiti Kebangsaan Malaysia; Assoc Prof Ir. Ts. Dr. Mohd Nazri Mohd Warip, P.ENG, CENG, CITP from Universiti Malaysia Perlis; Dr. Ir. Jamaaluddin, M.M from Universitas Muhammadiyah Sidoarjo.

We are glad to share with you that around 163 pre-registered authors are submitted their work in the conferences. However, its about 96 papers are selected and accepted for the conferences. All the papers have been through rigorous review by a panel of reviewers who provide critical comments and corrections, and have contributed substantially to the improvement of the quality of the papers to meet the requirements of International publication standard and IOP EES Scope.

We would like to express our sincere gratitude to the Chairman, the distinguished keynote speakers, as well as all the participants. We also want to thank the publisher for publishing the proceedings. May the readers could enjoy the gain some valuable knowledge from it. We are expecting more and more experts and scholars from all over the world to join this international event next year.

Chair of the Organizing Committee

Andista Candra Yusro

Editors

Andista Candra Yusro

Dwi Fajar Saputra

Mochammad Tanzil Multazam

Robbi Rahim

Host Organizer

Universitas Trisakti, Universitas Muhammadiyah Sidoarjo, Relawan Jurnal Indonesia, dan PT. Kresna Acitya Nusantara Mediatama

Committee

1. Ifdil, Ph.D (Universitas Negeri Padang - Indonesia)
2. Dr. Prantasi Harmi Tjahjanti, M.T (Universitas Muhammadiyah Sidoarjo - Indonesia)
3. Fredy Kurniawan, ST, MT, M.Eng., Ph.D (Universitas Narotama - Indonesia)
4. Dr. rer. nat. Bintoro Anang Subagyo (Institut Teknologi Sepuluh Nopember - Indonesia)
5. Ahmad Fudholi, Ph.D (Universiti Kebangsaan Malaysia - Malaysia)

Table of contents

Volume 819

2021

◀ Previous issue Next issue ▶

2nd International Conference Earth Science And Energy 11 November 2020, Kuala Lumpur, Malaysia

Accepted papers received: 02 July 2021

Published online: 14 July 2021

Open all abstracts

Preface

OPEN ACCESS 011001

Preface

+ Open abstract  View article  PDF

OPEN ACCESS 011002

Peer review declaration

+ Open abstract  View article  PDF

Agriculture

OPEN ACCESS 012001

Ganoderma boninense control in palm oil plantations using *Trichoderma harzianum* in various Media

Aries Sukariawan, Eka Bobby Febrianto, Sakiah, Muhammad Ridho and Doli Karnando

+ Open abstract  View article  PDF

OPEN ACCESS 012002

Preparation and characterization of cellulose microcrystalline made from palm oil midrib

Pada Mulia Raja, Ika Ucha P. Rangkuti, M. Hendra Ginting, Giyanto and Wahyu F. Siregar

+ Open abstract  View article  PDF

OPEN ACCESS 012003

The study of soil biological and chemical properties on palm oil plant rhizosphere with and without palm oil mill effluent applications

This site uses cookies. By continuing to use this site you agree to our use of cookies. To find out more, see our Privacy and Cookies policy.



[+ Open abstract](#) [View article](#) [PDF](#)

OPEN ACCESS

012004

Evaluation of the Value of the Defective and Taste of Arabica Coffee (*Coffea Arabica L*) West Sumatera

Rince Alfia Fadri, K Kesuma Sayuti, Novizar Nazir and Irfan Suliansyah

[+ Open abstract](#) [View article](#) [PDF](#)

OPEN ACCESS

012005

Utilization of alternative ingredients as combination feed on the growth of catfish (*Clarias sp.*)

RC Mukti, M Amin and Yulisman

[+ Open abstract](#) [View article](#) [PDF](#)

OPEN ACCESS

012006

Assessment on shallot farming development in North Padang Lawas Regency, North Sumatra

Moral Abadi Girsang, Palmarum Nainggolan, Shabil Hidayat, Suheri Sitepu and Khadijah El Ramija

[+ Open abstract](#) [View article](#) [PDF](#)

Agrotechnology

OPEN ACCESS

012007

Application of Trichoderma as an Alternative to the use of Sulfuric Acid Pesticides in the Control of Diplodia Disease on Pomelo Citrus

Mei Silvia and Sutarman

[+ Open abstract](#) [View article](#) [PDF](#)

OPEN ACCESS

012008

The Effect of Trichoderma and Onion Extract on the Success of Grafting in Mango Seedlings

Feroniza Berlian Sentosa, Sutarman and Intan Rahma Nurmallasari

[+ Open abstract](#) [View article](#) [PDF](#)

OPEN ACCESS

012009

Isolation and Performance Testing of *Bacillus subtilis* As Biological Agents to Control the Diplodia Disease on Siam Citrus

Dinda Aprilia, Agus Miftakhurohmat and Sutarman

[+ Open abstract](#) [View article](#) [PDF](#)

OPEN ACCESS

012010

This site uses cookies. By continuing to use this site you agree to our use of cookies. To find out more, see our [Privacy and Cookies policy](#).

K-Nearest Neighbor Algorithm to Identify Cucumber Maturity with Extraction of One-Order Statistical Features and Gray-Level Co-Occurrence



Syamsudduha Syahririni, Denny Syamsudin, Dwi Hadidjaja Rasjid Saputra and Akhmad Ahfas

[+ Open abstract](#) [View article](#) [PDF](#)

OPEN ACCESS

012011

Determination of Volatile Compounds on Traditional Fermentation of *Chao Teri*

Syahriati, UA Nur Fitriani and Muhammad Yusuf

[+ Open abstract](#) [View article](#) [PDF](#)

OPEN ACCESS

012012

Physicochemical, nutritional, and color characteristic of Nori Snack from Snakehead Fish (*Ophiocephalus striatus*), *Eucheuma cottonii*, and *Gracilaria sp*

Muhammad Yusuf, UA Nur Fitriani and Syahriati

[+ Open abstract](#) [View article](#) [PDF](#)

Animal Science

OPEN ACCESS

012013

Reproductive characters of hampala fish (*hampala macrolepidota kuhl & Van Hasselt, 1823*), correlation with body length

Suhestri Suryaningsih, Sri Sukmaningrum, Adi Amurwanto and Aswi Andriasari Rofiqoh

[+ Open abstract](#) [View article](#) [PDF](#)

OPEN ACCESS

012014

Efficacy of application time of *Penicillium sp.* suspension on White Root Fungus (*Rigidoporus lignosus*) in Nutmeg (*Myristica fragrans*)

Chairudin, Agustinur and J Permadi

[+ Open abstract](#) [View article](#) [PDF](#)

Aquatic Resource Management

OPEN ACCESS

012015

The correlation between mangrove ecosystem with shoreline change in Indramayu coast

Sofyan Hasanuddin Nur and Endang Hilmi

[+ Open abstract](#) [View article](#) [PDF](#)

Earth and Energy Science

OPEN ACCESS

012016


Microbial fuel cell based biocatalyst from traditional market waste water for energy production

Ummy Mardiana

This site uses cookies. By continuing to use this site you agree to our use of cookies. To find out more,

[see our Privacy and Cookies policy](#) [PDF](#)



-
- OPEN ACCESS** 012017
Sugarcane bagasse for environmentally friendly super-absorbent polymer: synthesis methods and potential applications in oil industry
Shabrina Sri Riswati, Rini Setiati, Sugiatmo Kasmungin, Suryo Prakoso and Muhammad Taufiq Fathaddin
[+ Open abstract](#) [View article](#) [PDF](#)
-
- OPEN ACCESS** 012018
Lithofacies Association of Fluvial Deposit, Walat Formation in Cibadak Area West Java
S D Hafiz, H Firman, A Ramadhan and W T Koesmawardhani
[+ Open abstract](#) [View article](#) [PDF](#)
-
- OPEN ACCESS** 012019
Geothermal Well Targeting in Consideration To Geological Structures of Mataloko Field, Flores
Untung Sumotarto, Yudistian Yunis, Fajar Hendrasto, Kris Pudyastuti, Evan R. Sammuel, Dhany Rizky and Arthur G.P. Nayoan
[+ Open abstract](#) [View article](#) [PDF](#)
-
- OPEN ACCESS** 012020
New Insight of Surface and Subsurface Sedimentology of Salodik Group, Banggai Basin
Firman Herdiansyah, M Burhannudinnur, M Ali Jambak and Teddy Irano
[+ Open abstract](#) [View article](#) [PDF](#)
-
- OPEN ACCESS** 012021
Petrophysical Analysis to Determine the Initial Oil Reserves in the AHP Field
Apolonius Harda Putranta Sudi, Ratnayu Sitaresmi and Prayang Sunny Yulia
[+ Open abstract](#) [View article](#) [PDF](#)
-
- OPEN ACCESS** 012022
Compatibility Test for Screening Surfactant Flooding
M Dhafa, R Setiati, M T Malinda and A Anugrahadi
[+ Open abstract](#) [View article](#) [PDF](#)
-
- OPEN ACCESS** 012023
The Opportunities and Constraints of Wind Energy
A A S Siahaya, R Setiati and M T Malinda
[+ Open abstract](#) [View article](#) [PDF](#)
-
- OPEN ACCESS** 012024
Effect of Improvement of Temperature and Gas Amount on Nitrogen Flooding and out more,
see our Privacy and Cookies policy. 
M T Malinda, R Setiati, M A Azizi and Y F Simbolon

[+ Open abstract](#) [View article](#) [PDF](#)

OPEN ACCESS

012025

Laboratory Study: The Effect of Clay Mineral in Sandstone on Resistivity of Rock

Ratnayu Sitaesmi, Rosidelly, Lia Mega and M. Taufiq Fathaddin

[+ Open abstract](#) [View article](#) [PDF](#)

OPEN ACCESS

012026

Drill Holes Spacing Analysis for Estimation and Classification of Coal Resources Based on Variogram and Kriging

M D Ramadhan, I Marwanza, C Nas, M A Azizi, W Dahani and R Kurniawati

[+ Open abstract](#) [View article](#) [PDF](#)

OPEN ACCESS

012027

The Palu Earthquake Formed a New Geological Structure

A. Anugrahadi, U. Sumarto and T. T. Purwiyono

[+ Open abstract](#) [View article](#) [PDF](#)

Energy

OPEN ACCESS

012028

Solar Energy Hybrid Control System Design Photovoltaic Using Fuzzy Logic Controller

Ramadan Salem Ramadan

[+ Open abstract](#) [View article](#) [PDF](#)

OPEN ACCESS

012029

Analysis of Overcurrent Safety in Miniature Circuit Breaker *AC (Alternating Current)* and *DC (Direct Current)* in Solar Power Generation Systems

Jamaaluddin Jamaaluddin, Indah Sulistiyowati, BWA. Reynanda and Izza Anshory

[+ Open abstract](#) [View article](#) [PDF](#)

OPEN ACCESS

012030

The Application of Geostatistical Analysis on Radiometric Mapping Data to Recognized the Uranium and Thorium Anomaly in West Sulawesi, Indonesia.

I Gde Sukadana, I Wayan Warmada, Agung Harijoko, Frederikus Dian Indrastomo and Heri Syaeful

[+ Open abstract](#) [View article](#) [PDF](#)

Environmental Issue

OPEN ACCESS

012031

Causes, Dynamics, and Environmental Conflict Resolution Models in Coal-Fired Steam Power Plant Development Locations

This site uses cookies. By continuing to use this site you agree to our use of cookies. To find out more, see our Privacy and Cookies policy.



Ria Ishardanti, Herdis Herdiansyah and Francisia Saveria Sika Ery Seda

[+ Open abstract](#) [View article](#) [PDF](#)

OPEN ACCESS

012032

Illegal artisanal and small-scale mining practices: re-thinking the harm

Putu P. S. Agustina, Herdis Herdiansyah and Anggi A. Harahap

[+ Open abstract](#) [View article](#) [PDF](#)

OPEN ACCESS

012033

Good Governance Role for a Sustainable Solid Waste Management in Rural Community

Ari Naldi, Herdis Herdiansyah and L G Saraswati Putri

[+ Open abstract](#) [View article](#) [PDF](#)

OPEN ACCESS

012034

Climate Village Program for Climate Change Adaptation and Mitigation for Green Villages

Herdis Herdiansyah

[+ Open abstract](#) [View article](#) [PDF](#)

OPEN ACCESS

012035

Sustainable Development on Indonesian Environmental Risk Assessment

Agastyo Djanardono Basoeki, Herdis Herdiansyah and Yuki M. Adhitya Wardhana

[+ Open abstract](#) [View article](#) [PDF](#)

OPEN ACCESS

012036

Soybean production response: A study of Jambi's acreage response under policy program

Edison and Dharia Renate

[+ Open abstract](#) [View article](#) [PDF](#)

OPEN ACCESS

012037

Contribution of Oil Palm Plantation to Household in Kolaka District of Southeast Sulawesi

Haji Saediman, Rahmayana Rahmayana, Yusna Indarsyih, Nuryamin Budi and Lukman Yunus

[+ Open abstract](#) [View article](#) [PDF](#)

OPEN ACCESS

012038

The Development of Communication Model for the Empowerment of Highly Poor Villages in Pangandaran Regency, West Java, Indonesia

Y Yustikasari, I Gemiharto and F Ayuningtyas

[+ Open abstract](#) [View article](#) [PDF](#)

This site uses cookies. By continuing to use this site you agree to our use of cookies. To find out more, see our [Privacy and Cookies policy](#).



OPEN ACCESS 012039
Managing the uncertainty during COVID-19 pandemic: Communicating disaster and food industry sustainability
Myra V. de Leon, Daniel Susilo, Teguh Dwi Putranto, Fadjar Kurnia Hartati and Roberto Rudolf T. Santos
[+ Open abstract](#) [View article](#) [PDF](#)

OPEN ACCESS 012040
MRT as an Alternative Transportation Solution which is environmentally friendly and traffic jam free in Jakarta
Elfrida Ratnawati
[+ Open abstract](#) [View article](#) [PDF](#)

OPEN ACCESS 012041
Social-Ecological Vulnerability and Livelihood Improvement Strategies of Landslide Victims in Pattaliking Village, Gowa Regency in National Security Perspective
Khairunnisa Adri, Siswo Hadi Sumantri, Sugeng Triutomo and Deffi Ayu Puspito Sari
[+ Open abstract](#) [View article](#) [PDF](#)


OPEN ACCESS 012042
Determination of priority locations for the implementation of rice farming insurance: a case study on disaster hazards in Cilacap regency
Unggul Pramukti, Suryanto and Evi Gravitaniani
[+ Open abstract](#) [View article](#) [PDF](#)

OPEN ACCESS 012043
Smallholder adoption of horticultural crops: the case of dragon fruit in Southeast Sulawesi
Haji Saediman, Ilham Saediman Mboe, Budiyanto Budiyanto, Sarinah Sarinah and Hidrawati Hidrawati
[+ Open abstract](#) [View article](#) [PDF](#)

Environmental Policy

OPEN ACCESS 012044
The government policy on the covid-19 handling viewed from environmental and biodiversity perspectives
Suwari Akhmaddhian, Toto Supartono, Erga Yuhandra, Haris Budiman and Diding Rahmat
[+ Open abstract](#) [View article](#) [PDF](#)

Environmental Science

OPEN ACCESS 012045
Fish diversity monitoring in Maninjau Lake, West Sumatra using the eDNA with the next generation sequencing (NGS) technique 

D I Roesma, D H Tjong, M N Janra and D R Aidil

[+ Open abstract](#) [View article](#) [PDF](#)

OPEN ACCESS

012046

Protecting Biodiversity: The Importance of Understanding the Role of Government and Society in Human-Urban Wildlife Interaction in Indonesia

Peni Puspitasari, Herdis Herdiansyah and Donna Asteria

[+ Open abstract](#) [View article](#) [PDF](#)

OPEN ACCESS

012047

The effect of maggots lentera flies (*hermetia illucens*) growing media as the solution of using organic waste

Nina Herlina, Nurdin, Bambang Yudayana, Iing Nasihin and Ai Nurlaila

[+ Open abstract](#) [View article](#) [PDF](#)

OPEN ACCESS

012048

Habitat characteristics and population of *leptophryne javanica* in Curug Cisurian, Kopi Bojong, and Ciinjuk in Gunung Ciremai National Park

Ika Karyaningsih, Nurdin, W Indra, Nina Herlina and Ai Nurlaila

[+ Open abstract](#) [View article](#) [PDF](#)

OPEN ACCESS

012049

Structure and similarities of Understorey Vegetation Communities in the mining area of PT. Indocement Tungal Prakarsa Tbk. Palimanan Unit, Cirebon

Iing Nasihin, Dede Kosasih, Nina Herlina and Ai Nurlaila

[+ Open abstract](#) [View article](#) [PDF](#)

OPEN ACCESS

012050

Dynamics of dengue hemorrhagic fever incidence and climate as potential factors in Palembang 2013 – 2019

Krisna Delita, Nurhayati Damiri, Rico Januar Sitorus, Poeji Loekitowati Hariani, Fika Minata Wathan and H Annisa Tassia

[+ Open abstract](#) [View article](#) [PDF](#)

Food Science

OPEN ACCESS

012051

The distillation process of palm sap (*Arenga pinnata* MERR) to produce bioethanol

Ansar, Nazaruddin and Atri Dewi Azis

[+ Open abstract](#) [View article](#) [PDF](#)

This site uses cookies. By continuing to use this site you agree to our use of cookies. To find out more,

[View our Privacy and Cookies policy.](#)

012052

Quality of Fermented Purple Sweet Potato (*Ipomea batatas* var. *Ayamurasaki*) (Tapai) in Various Yeast Concentration and Steaming Time

R Azara, L Qur'aini, I A Saidi, L Hudi, S R Nurbaya and R U Budiandari

[+](#) Open abstract [View article](#) [PDF](#)

OPEN ACCESS

012053

Characteristics of Dry Carrot Noodle (*Daucus carota* L) with Proportion of Wheat Flour and White Oyster Mushroom Flour (*Pleurotus ostreatus*)

L Hudi, I A Saidi, R Azara and T R Pratiwi

[+](#) Open abstract [View article](#) [PDF](#)

OPEN ACCESS

012054

Determination of Level of Lead (Pb) and Cadmium (Cd) Migration on Bowl and Clear Plastic Cup Using Atomic Absorption Spectrophotometer

Hurip Budi Riyanti and Y Yeni

[+](#) Open abstract [View article](#) [PDF](#)

OPEN ACCESS

012055

Optimization and Validation Methods for Assay of Acyclovir Cream Determination by High Performance Liquid Chromatography

Muhamad Zaenudin, Almawati Situmorang and S Supandi

[+](#) Open abstract [View article](#) [PDF](#)

OPEN ACCESS

012056

Total Flavonoids Content of Polar Extracts of *Cayratia trifolia* Leaves

Ni Putu Ermi Hikmawanti, Tuti Wiyati, M. Abdul Muis, Farah Aisyah Nurfaizah and Windy Septiani

[+](#) Open abstract [View article](#) [PDF](#)

OPEN ACCESS

012057

Chemical Component of Kencur (*Kaemferia galanga* L.) Ethanolic Extract Using Gas Chromatography-Mass Spectrometry

Ni Putu Ermi Hikmawanti, Supandi, Lusi Putri Dwita and Yeni

[+](#) Open abstract [View article](#) [PDF](#)

OPEN ACCESS

012058

Effect of Glycerin as Plasticizer in Formulation of Grape Seed Oil (*Vitis vinifera* L.) Emulgel Peel-Off Mask

Fith Khaira Nursal, Nining and Aisyah Rahmani

[+](#) Open abstract [View article](#) [PDF](#)

OPEN ACCESS

012059

This site uses cookies. By continuing to use this site you agree to our use of cookies. To find out more, see our [Privacy](#) and [Cookies](#) policy.



Mukhoirotin, Kurniawati and Diah Ayu Fatmawati

[+ Open abstract](#) [View article](#) [PDF](#)

OPEN ACCESS

012060

The Effects of Pineapple Extract Toothpaste (*Ananas comosus L.Merr*) on Saliva Flow Rate

Minarni, Susi and Murniwati

[+ Open abstract](#) [View article](#) [PDF](#)

OPEN ACCESS

012061

The use of coconut water (*cocos nucifera l.*) as alternative media to substitute Sabouraud Dextrose Agar (SDA) for the growth of *aspergillus flavus*

Widhorini, Asep Ginanjar Arip and Astrini Wulandari

[+ Open abstract](#) [View article](#) [PDF](#)

OPEN ACCESS

012062

Diversity of insect pollinator on farmland near to mount Ciremai National Park

Ai Nurlaila, Ika Karyaningsih, Nina Herlina, Iing Nasihin and Bambang Yudayana

[+ Open abstract](#) [View article](#) [PDF](#)

OPEN ACCESS

012063

Vegetation structure and species composition of habitat types *Goniothalamus macrophyllus* (Blume) Hook.f. and Thomson in Lowland Forest, Kuningan Regency, West Java

Ilham Adhya, Yayan Hendrayana, Toto Supartono, Agus Yadi Ismail and Nurdin

[+ Open abstract](#) [View article](#) [PDF](#)

OPEN ACCESS

012064

Activity of valerian catalase in Ultisol growing media by adding humic acid

Elly Proklamasiningsih and Pudji Widodo

[+ Open abstract](#) [View article](#) [PDF](#)

OPEN ACCESS

012065

Siam Madu citrus seeding in supporting the development of Sumatra citrus zone

Imelda S Marpaung, Perdinanta Sembiring, Moral A Girsang and Tommy Purba

[+ Open abstract](#) [View article](#) [PDF](#)

OPEN ACCESS

012066

A cross-sectional study of vitamin A, C and D and Iron daily intake among adolescents and its correlation with over nutrition status

M A M Putri, D Indarto and V Widyaningsih

[+ Open abstract](#) [View article](#) [PDF](#)

This site uses cookies. By continuing to use this site you agree to our use of cookies. To find out more, see our Privacy and Cookies policy.



OPEN ACCESS

012067

Biochemical content of Robusta coffees under fully-wash, honey, and natural processing methods

Sri Wulandari, Makhmudun Ainuri and Anggoro Cahyo Sukartiko

[+ Open abstract](#) [View article](#) [PDF](#)

OPEN ACCESS

012068

Characterization of GABA (gamma-aminobutyric acid) levels some fermented food in Indonesia

Heny Herawati, Diana Nur Afifah, Eni Kusumanigtyas, Sri Usmiati, Agus S. Soemantri, Miskiyah, Elmi Kamsiati and Muchamad Bachtiar

[+ Open abstract](#) [View article](#) [PDF](#)

OPEN ACCESS

012069

Differences in the effect of online nutrition education through lectures without and with online games on increasing knowledge of Nutrition, Iron, and vitamin C intake of young women

N S O Lorenza, E S Sulaeman and V Widyaningsih

[+ Open abstract](#) [View article](#) [PDF](#)

OPEN ACCESS

012070

Diversity and abundance of insect pollinator on *dimocarpus longan l.* in Sawitsari research station, Sleman, Yogyakarta

Ultha Rifqy Riswanta, Nico Chandra Aditya, Anas Sobri and Sukirno Sukirno

[+ Open abstract](#) [View article](#) [PDF](#)

OPEN ACCESS

012071

In silico development of new candidate of NADPH oxidase inhibitor for hypertension treatment

Agung Budi Laksono, Ratna Kusumawati, Yuliana Heri Suselo and Dono Indarto

[+ Open abstract](#) [View article](#) [PDF](#)

OPEN ACCESS

012072

Iron supplement for anemia developed from home industry waste of snake fruit Pondoh (Snake fruit *edulis Reinw.*)

K Natasia, D Indarto, B Wasita, D Melati and I K Ristanti

[+ Open abstract](#) [View article](#) [PDF](#)

OPEN ACCESS

012073

Study of proximate composition, antioxidant activity and sensory evaluation of cooked rice with addition of cherry (*Muntingia calabura*) leaf extract.

Yoyanda Bait, Djagal Wiseso Marseno, Umar Santoso and Yustinus Marsono

[+ Open abstract](#) [View article](#) [PDF](#)
This site uses cookies. By continuing to use this site, you agree to our use of cookies. To find out more, see our Privacy and Cookies policy.

OPEN ACCESS

012074

Study of rice seed certification at the Gorontalo Province seed certification supervision center

Merita Ayu Indrianti, Jefri Hala, Meity Melani Mokoginta, Mohamad Ervandi and Fahrullah

[+ Open abstract](#) [View article](#) [PDF](#)

OPEN ACCESS

012075

Variations in the incubation time of the *Staphylococcus aureus*, *Bacillus* sp and *Escherichia coli* cultures on the results of the gram stain visualization

Endah Prayekti and Thomas Sumarsono

[+ Open abstract](#) [View article](#) [PDF](#)

Food Technology

OPEN ACCESS

012076

Innovation development information system for sales of traditional food processed product web based in the Cibinuang Village

Tito Sugiharto, Mohammad Irwansyah, Sepphirotul Ajiziyah, Widi Heryanto and Syarif Hidayat

[+ Open abstract](#) [View article](#) [PDF](#)

Forest Science

OPEN ACCESS

012077

Forest Land Management System and Effect on The Presence Of Birds at Nusa Laut Island

M Tjoa and Fransina Latumahina

[+ Open abstract](#) [View article](#) [PDF](#)

OPEN ACCESS

012078

Distribution and association of *Ficus* spp in the shrubs area of Gunung Ciremai National Park Indonesia

Yayan Hendrayana, Toto Supartono, Ilham Adhya, Agus Yadi Ismail and Dede Kosasih

[+ Open abstract](#) [View article](#) [PDF](#)

OPEN ACCESS

012079

Use of faecal pellet count method in estimating population density of mammals in Gunung Ciremai National Park

Toto Supartono, Ilham Adhya, Yayan Hendrayana, Dede Kosasih and Bambang Yudayana

[+ Open abstract](#) [View article](#) [PDF](#)

OPEN ACCESS

012080

This site uses cookies. By continuing to use this site, you agree to our use of cookies. To find out more, see our Privacy and Cookies policy.



Retno Agustarini, Yetti Heryati and Yelin Adalina

[+ Open abstract](#) [View article](#) [PDF](#)

OPEN ACCESS

012081

The teak log volume estimation model for Sawn Timber: Case in Forest Management Unit (FMU) Bojonegoro – Perhutani – East Java - Indonesia

L Abdulah, R Imanuddin and A P Utama

[+ Open abstract](#) [View article](#) [PDF](#)

Marine Science

OPEN ACCESS

012082

Alternative income of Tomini Bay Coastal Communities (case study in Bone Bolango District, Gorontalo Province, Indonesia)

Lis M Yapanto, Nuddin Harahab and Dahniar Th. Musa

[+ Open abstract](#) [View article](#) [PDF](#)

Oil Science

OPEN ACCESS

012083

Effect of Heterogeneity of Reservoir Properties on Sandstone Formations in Oil Recovery

Samsol, Sigit Rahmawan and Onnie Ridaliani

[+ Open abstract](#) [View article](#) [PDF](#)

Plant Science

OPEN ACCESS

012084

Allicin Chemical Stability Test in the Phytosome of Garlic Extract (*Allium sativum* L)

Rahmah Elfiyani, Anisa Amalia and Adesi Chenia

[+ Open abstract](#) [View article](#) [PDF](#)

OPEN ACCESS

012085

NANOEMULATION OF MIXED *Tephrosia vogelii* AND *Piper aduncum* AS AN ALTERNATIVE CONTROL OF CABBAGE PEST *Crociodolomia pavonana*

Eka Candra Lina, Reflin, Lei Harismi Erlina and Duma Putri Tama

[+ Open abstract](#) [View article](#) [PDF](#)

Pollution

OPEN ACCESS

012086

This site uses cookies. By continuing to use this site you agree to our use of cookies. To find out more, see our Privacy and Cookies policy.



Effect of Personal Protective Equipment (PPE) on oxygen saturation and dehydration status in COVID-19 nurses in Gorontalo Province

Yusrin Aswad and Suwarni Loleh

[+ Open abstract](#) [View article](#) [PDF](#)

Sustainable Development

OPEN ACCESS

012087

Production Planning and Inventory Control of Atonic Fertilizer Products Using Static Lot Sizing Method

Hendy Tannady, Joseph M J Renwarin, Andi Nurhikmah Daeng Cora and Edi Purwanto

[+ Open abstract](#) [View article](#) [PDF](#)

Waste Management System

OPEN ACCESS

012088

Waste management model at Bugel Village – Kulonprogo District, Yogyakarta Special Province

Darojad N. Agung Nugroho and Muhammad Dawam

[+ Open abstract](#) [View article](#) [PDF](#)

Water Science

OPEN ACCESS

012089

Water availability model based on system dynamic: Sadar sub-watershed case study

ET Asmorowati and D Sarasanty

[+ Open abstract](#) [View article](#) [PDF](#)

Weather and Climate Science

OPEN ACCESS

012090

Spatial Analysis of Rainfall Return Period and Probable Maximum Precipitation over Central Java - Indonesia

Andung Bayu Sekaranom, Muhammad Fianggoro and Rinut Manuhana Wicaksono

[+ Open abstract](#) [View article](#) [PDF](#)

JOURNAL LINKS

[Journal home](#)

[Journal scope](#)

[Information for organizers](#)

This site uses cookies. By continuing to use this site you agree to our use of cookies. To find out more,

[see our Privacy and Cookies policy.](#)



Contact us

Reprint services from Curran Associates

This site uses cookies. By continuing to use this site you agree to our use of cookies. To find out more, see our [Privacy and Cookies policy](#).



PAPER • OPEN ACCESS

Chemical Component of Kencur (*Kaemferia galanga* L.) Ethanolic Extract Using Gas Chromatography-Mass Spectrometry

To cite this article: Ni Putu Ermi Hikmawanti *et al* 2021 *IOP Conf. Ser.: Earth Environ. Sci.* **819** 012057

View the [article online](#) for updates and enhancements.

Chemical Component of Kencur (*Kaemferia galanga* L.) Ethanolic Extract Using Gas Chromatography-Mass Spectrometry

Ni Putu Ermi Hikmawanti¹, Supandi^{2*}, Lusi Putri Dwita³, Yeni²

¹Department of Pharmaceutical Biology, Faculty of Pharmacy and Sciences, Universitas Muhammadiyah Prof DR. HAMKA, DKI Jakarta, 13460, Indonesia

²Department of Pharmaceutical Chemistry, Faculty of Pharmacy and Sciences, Universitas Muhammadiyah Prof DR. HAMKA, DKI Jakarta, 13460, Indonesia

³Department of Pharmacology, Faculty of Pharmacy and Sciences, Universitas Muhammadiyah Prof DR. HAMKA, DKI Jakarta, 13460, Indonesia

*supandi@uhamka.ac.id

Abstract. *Kaemferia galanga* L. or kencur is a traditional plant that known has potential antioxidant and anti-inflammatory activities because of its chemical compound such as ethyl *p*-methoxycinnamate. This study aimed to analyze the chemical compound of ethanolic extract of kencur using gas chromatography-mass spectrometry. Kencur was extracted by cold maceration using ethanol-water (70:30) at room temperature. From this procedure, the filtrate (extract of kencur) and crystal are produced. The crystal then was crystallization using ethanol. The ethanolic extract and crystal were analyzed qualitatively using gas chromatography-mass spectrometry. The results show that in the ethanol extract identified there were 5 compounds, namely ethyl-*trans-p*-methoxycinnamate (84.55%); ethyl cinnamate trans (5.05%), methyl 4-methoxycinnamate (4.02%), ethyl-*cis-p*-methoxycinnamate (2.85%) and benz[A]azulene-1,4-dione, 2,3-dimethyl- (1.49%). Whereas the crystals are ethyl-*trans-p*-methoxycinnamate (96.20%) and methyl 4-methoxycinnamate (1.62%). It was concluded that ethyl-*trans-p*-methoxycinnamate was the main compound of kencur which was easily obtained by cold extraction.

1. Introduction

Ethyl *p*-methoxycinnamate is one of the compound from derivates cinnamate from non-flavonoids phenolic groups [1] that have exhibited anti-inflammatory properties. This compound also plays a role in pharmacological activities such as anticancer, antimicrobial, angiogenesis inhibitors, etc. [2]. Ethyl *p*-methoxycinnamate can be found in high levels *Kaemferia galanga* L. (or kencur) rhizome. Ethanol is a solvent suitable for extraction of ethyl *p*-methoxycinnamate than chloroform, dichloromethane and hexane [3]. Gas Chromatography-Mass Spectrometry (GC-MS) is the reproducible, accurate and suitable for analysis and identification the ethyl *p*-methoxycinnamate from extracts of kencur [4]. This study aimed to analyze the ethyl *p*-methoxycinnamate and other chemical compounds of ethanolic extract of kencur and its crystal were obtained during the cold extraction process using (GC-MS). The



percent of ethyl *p*-methoxycinnamate could be used as a biomarker compound for standardization of kencur rhizome as a natural source of pharmaceutical drugs[5].

2. Material and Methods

Collection of plant

The kencur rhizome were collected from the Unit Konservasi Budidaya Biofarmaka (UKBB), Pusat Studi Biofarmaka Tropika LPPM IPB, Bogor, West Java, Indonesia. Plant was identified in Herbarium Bogoriense, Biology Research Centre, Indonesian Institute of Sciences/Lembaga Ilmu Pengetahuan Indonesia (LIPI), Cibinong, Indonesia. The cleaned of kencur fresh rhizomes then dried for a few days and were made into powder.

Extraction

The dried powder of kencur rhizomes (1 kg) was extracted in ethanol:water (70:30, v/v) using cold maceration method in macerator for 3 x 24 h. The extract then was decanted and filtered through a Whatman filter paper. The filtrate was evaporated using a vacuum rotary-evaporator N-1200 BS series EYELA (Shanghai, China) at 50 °C[6]. The residue from filtration procedure contains the crystals and amyllum. The residue was collected, washed using ethanol, decanted, and recollected then crystallization using ethanol solvent. The ethanolic extract and crystals then were analyzed using gas chromatography-mass spectrometry.

Phytochemical Screening of Ethanolic Extract

The phytochemical compounds of kencur ethanolic extract, such as phenolics, flavonoids, alkaloids, tannins, and saponins were qualitatively identified following standard procedures describes in the Harborne[7] and Indonesian Herb Pharmacopoeia[6].

Analysis of Chemical Compounds

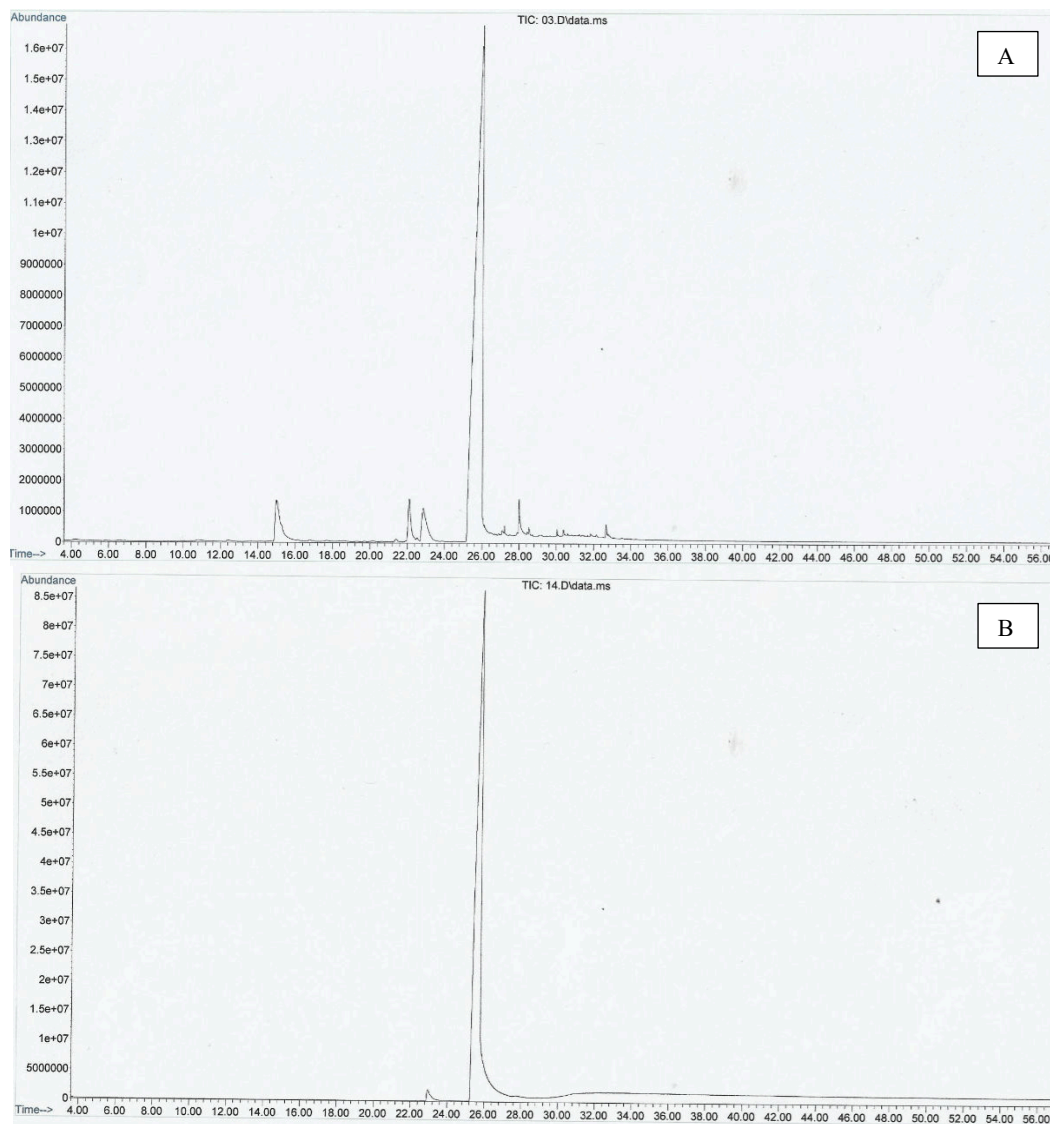
Analysis of chemical compounds of the extract and crystal was performed in the Laboratorium Kesehatan Daerah, Dinas Kesehatan, Pemerintah Provinsi DKI Jakarta, Indonesia. The ethanolic extract and crystal were dissolved in methanol. The solution then derived by bis-(trimethylsilyl) acetamide reagent and 20 µL of pyridine. The obtained solution was incubated for 60 min at 80°C. Five µL of each sample solution was analyzed with the Gas Chromatography with AutoSampler (Agilent Technologies 7890), 5975 Mass Selective Detector and Chemstation data system. The separation was carried out using the capillary column (HP Ultra 2) with a length of 30 m × 0.20 mm I.D × 0.11 µm of film thickness. The carrier gas was helium at a constant flow rate of 1.2 mL/min. The injection port temperature was set at 250 °C. The initial temperature of the oven was set at 80 °C then hold for 0 min, rising at 3 °C/min to 150 °C then hold for 1 min and finally rising at 20 °C/min to 280 °C then hold for 26 min. The components were identified based on compatibility with an authentic mass spectrum in Wiley electronic library. The criteria for the major compounds in the GC-MS chromatogram if the compound has a percent area >5% (Herebian *et al.* (2009). The similarity of mass spectra of the sample with a library was determined at a qualifier value of at least 80%.

3. Results and Discussion

In this study, the percentage of extraction yield from ethanolic extract of kencur was 9.56%. Organoleptic characteristics of kencur extract show a distinctive odour, light brown colour, thick shape, and a spicy taste on the tongue. According to Indonesian Herb Pharmacopoeia (2008)[6], ethanolic extract of kencur rhizome with good quality is not less than 8.3%. The phytochemical screening shows that ethanolic extract contains phenolics, flavonoids, tannins, saponins, and alkaloids. Chromatogram of kencur ethanolic extract and the crystals are shown in Figure 1 dan Figure 2. The ethanolic extract had five chemical compounds with the major compounds is ethyl *p*-methoxycinnamate (84.55%). Whereas the crystals had two compounds with the major compounds is ethyl *p*-methoxycinnamate (96.20%) (Tabel 1).

Table 1. Chemical compounds of ethanolic extract and crystal of kencur rhizome

Samples	RT	Quality	Compounds	Percentage (%)	Molecular weight	Characteristic MS fragments
Ethanolic extract of kencur	14.998	98	<i>trans</i> -Ethyl cinnamate	5.05	176	176, 148, 131, 103, 77
	22.114	99	Ethyl- <i>cis-p</i> -methoxycinnamate	2.85	206	206, 161, 134, 77
	22.866	98	Methyl 4-methoxycinnamate	4.02	192	192, 161, 133
	25.976	99	Ethyl- <i>trans-p</i> -methoxycinnamate	84.55	206	206, 161, 134, 77
	28.017	83	Benz [A] azulene-1,4-dione, 2,3-dimethyl-	1.49	236	236, 208, 193
Crystal of kencur	22.956	98	Methyl 4-methoxycinnamate	1.62	192	192, 161, 133
	25.742	94	Ethyl- <i>trans-p</i> -methoxycinnamate	96.20	206	206, 161, 134, 77

**Figure 1.** The chromatogram of ethanolic extract (A) and crystal (B) of kencur

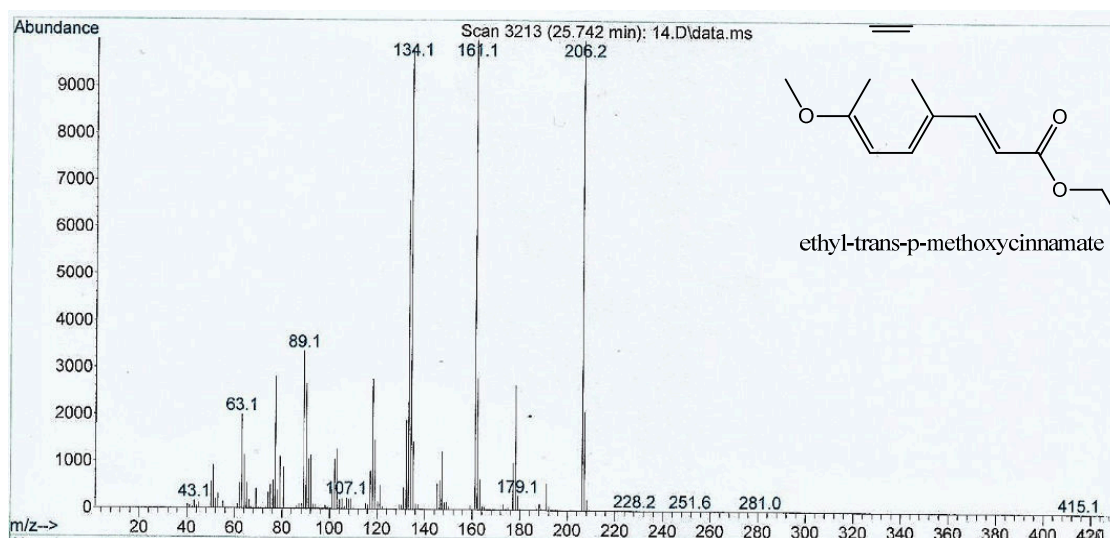


Figure 2. Fragmentation of the most abundant peak with retention time 25.976 (ethyl-*trans-p*-methoxycinnamate) in ethanolic extract and 25.742 in crystals of kencur with an estimated molecular weight of 206.

Based on **FIGURE 1.**, it shows that the peaks in retention times of 25.976 (in ethanol extract of kencur, A) and 25.742 (crystals of kencur, B) dominate the chromatogram pattern. The compound has a molecular weight of 206 with characteristic fragmentation patterns at 134, 161 and 206 m/z as in the mass spectrum of ethanolic extract (A) and crystal of kencur (B). With these data, it shows that the ethanol extract and crystals of kencur are dominated by ethyl-*trans-p*-methoxycinnamate compounds.

Ethyl-*p*-methoxycinnamate is an ester containing a benzene ring and a methoxy group which is nonpolar and contains a carbonyl group that binds to ethyl which is somewhat polar. The crystals were obtained from this extraction (0.71%). According to Indonesian Herb Pharmacopeia (2008)[6], the ethyl-*trans-p*-methoxycinnamate content in 70% ethanol extract of kencur is not less than 4.30%. There is a difference in the yield obtained from crystals with theory because these crystals are produced from a series of extraction procedures with ethanol as a solvent. Ethanol is one of the best solvents to obtain the polyphenol group compound [8]. Thus, it is better if when extracting kencur with a cold maceration process using ethanol it should be more careful so that no ethyl-*trans-p*-methoxycinnamate crystals are left in the residue.

4. Conclusions

In this study, ethyl-*trans-p*-methoxycinnamate was the main compound of kencur ethanolic extract. The crystals produced during the extraction process also show ethyl-*trans-p*-methoxycinnamate purity with one dominant peak. It means that it is effortless to extract this compound using the cold maceration method.

Acknowledgments

Authors thank to Directorate General of Research and Development Strengthening Ministry of Research, Technology of the Republic Indonesia (Kemristek/BRIN) for support of this study, grants number 25/E1/KPT/2020.

References

- [1] D. L. . Ambriz-Pérez, N. . Leyva-López, E. P. . Gutierrez-Grijalva, and B. Heredia, "Phenolic compounds: Natural alternative in inflammation treatment. A Review," *Cogent Food Agric.*, vol. 2, no. 1131412, pp. 1–14, 2016.
- [2] S. Munda, P. Saikia, and M. Lal, "Chemical composition and biological activity of essential oil of *Kaempferia galanga*: A review," *J. Essent. Oil Res.*, vol. 30, no. 5, pp. 303–308, 2018.
- [3] N. Srivastava *et al.*, "Aromatic ginger (*Kaempferia galanga* L.) extracts with ameliorative and protective potential as a functional food, beyond its flavor and nutritional benefits," *Toxicol. Reports*, vol. 6, no. January, pp. 521–528, 2019.

- [4] M. I. Umar *et al.*, “Bioactivity-guided isolation of ethyl-p-methoxycinnamate, an anti-inflammatory constituent, from *Kaempferia galanga* L. extracts,” *Molecules*, vol. 17, no. 7, pp. 8720–8734, 2012.
- [5] A. P. Raina and Z. Abraham, “Chemical profiling of essential oil of *Kaempferia galanga* L. germplasm from India,” *J. Essent. Oil Res.*, vol. 28, no. 1, pp. 29–34, 2016.
- [6] Ministry of Health Republic of Indonesia, *Farmakope Herbal Indonesia (Indonesian Herb Pharmacopoeia)*, 1st Ed. Jakarta: Ministry of Health Republic of Indonesia, 2008.
- [7] J. Harborne, *Metode Fitokimia: Penentuan Cara Modern Menganalisis Tumbuhan (In Bahasa)*. Bandung: ITB Press, 1987.
- [8] P. Tiwari, B. Kumar, M. Kaur, G. Kaur, and H. Kaur, “Phytochemical screening and Extraction: A Review,” *Int. Pharm. Sci.*, vol. 1, no. 1, pp. 98–106, 2011