

Article

Breakfast Consumption and Quality of Macro- and Micronutrient Intake in Indonesia: A Study from the Indonesian Food Barometer

Helda Khusun^{1,2,3,*}, Roselyne Anggraini², Judhiastuty Februhartanty^{2,3}, Elise Mognard^{4,5,6,7} , Khalida Fauzia², Nursyifa Rahma Maulida¹, Ony Linda¹ and Jean-Pierre Poulain^{4,5,6,7} 

- ¹ Faculty of Health Sciences, University of Muhammadiyah Prof. Dr. HAMKA, Jakarta 12130, Indonesia; nursyifa.maulida@uhamka.ac.id (N.R.M.); ony_linda@uhamka.ac.id (O.L.)
- ² Southeast Asian Ministers of Education Organization Regional Centre for Food and Nutrition (SEAMEO RECFON)—Pusat Kajian Gizi Regional (PKGR), Universitas Indonesia, Jakarta 13120, Indonesia; lynne.prigel@gmail.com (R.A.); jfebruhartanty@seameo-recfon.org (J.F.); khalidafauzia@seameo-recfon.org (K.F.)
- ³ Nutrition Department, Faculty of Medicine, Universitas Indonesia—Dr. Cipto Mangunkusumo General Hospital, Jakarta 10430, Indonesia
- ⁴ Chair “Food Studies: Food, Cultures & Health”, Taylor’s University (Malaysia), Subang Jaya 47500, Malaysia; eliseline.mognard@taylors.edu.my (E.M.); jean-pierre.poulain@univ-tlse2.fr (J.-P.P.)
- ⁵ Centre for Asian Modernisation Studies (CAMS), Taylor’s University (Malaysia), Subang Jaya 47500, Malaysia
- ⁶ Faculty of Social Sciences and Leisure Management, Taylor’s University (Malaysia), Subang Jaya 47500, Malaysia
- ⁷ Centre d’Études et de Recherche: Travail, Organisation, Pouvoir (CERTOP) UMR CNRS 5044, Université de Toulouse (France), 31000 Toulouse, France
- * Correspondence: helda_khusun@uhamka.ac.id or hkhusun@seameo-recfon.org

Abstract: Breakfast is an important meal that has been shown to have a positive effect on health. The current study aimed to assess the patterns of breakfast consumption among adult Indonesians and to estimate the contribution of breakfast to their nutrient intake and dietary quality. The study used 24-h recall data from the 2018 Indonesian Food Barometer study to assess breakfast intake among 1333 adults aged 18 and above from six provinces in Indonesia. Diet quality was measured using the Nutrient Rich Food index (NRF) 9.3, and the nutritional profile of breakfast was compared across tertiles of NRF 9.3. In total, 5.2% of adults in Indonesia skipped breakfast. Breakfast contributed 26% to daily energy intakes and 22–28% to intakes of all reported nutrients, except for total sugar (12%), vitamin C (8%) and vitamin D (7%). With respect to daily requirements, breakfast contributed approximately 20% to energy, protein, fat and sodium requirements, 26% to saturated fat but <15% to the requirements for most micronutrients and only 5% for fiber. Among breakfast consumers, a higher NRF score was associated with higher daily intakes of protein, dietary fiber and micronutrients and lower intakes of sodium from breakfast. This study suggests that a balanced breakfast in Indonesia should aim to lower fat and saturated fat intake while increasing fiber, potassium, calcium and vitamin C and D intake. These findings could inform the development of nutrient-based guidelines for breakfast consumption in Indonesia.

Keywords: breakfast consumption; diet quality; Indonesia; nutrient intake; nutrient-rich food index 9.3



Citation: Khusun, H.; Anggraini, R.; Februhartanty, J.; Mognard, E.; Fauzia, K.; Maulida, N.R.; Linda, O.; Poulain, J.-P. Breakfast Consumption and Quality of Macro- and Micronutrient Intake in Indonesia: A Study from the Indonesian Food Barometer. *Nutrients* **2023**, *15*, 3792. <https://doi.org/10.3390/nu15173792>

Academic Editor: Hayato Tada

Received: 18 July 2023

Revised: 16 August 2023

Accepted: 25 August 2023

Published: 30 August 2023



Copyright: © 2023 by the authors. Licensee MDPI, Basel, Switzerland. This article is an open access article distributed under the terms and conditions of the Creative Commons Attribution (CC BY) license (<https://creativecommons.org/licenses/by/4.0/>).

1. Introduction

Indonesia is currently facing the triple burden of malnutrition, with undernutrition and over nutrition existing side by side and coupled with micronutrient deficiency [1]. The last National Total Diet Study in 2014 showed that consumption patterns of Indonesians are still dominated by cereal and plant protein sources with very low adherence to fruit and vegetable recommendations, while the consumption of sugar, salt and fat is already approaching maximum recommended levels [2,3]. Several studies among women and men

have shown that the overall diet quality among Indonesians using different diet quality measures is considered low [4–6] or as needing improvement [7] with respect to meeting the Indonesian dietary guidelines [8].

The Indonesian dietary guidelines enacted in 2015 have 10 nutrition messages, 1 of which is a recommendation to eat breakfast every day [8]. In the guidelines, breakfast is defined as eating and drinking activities from waking-up in the morning to 09:00 a.m., and it should meet about 15 to 30% of the Recommended Dietary Allowance (RDA) to promote healthy, active and productive living [8]. Past evidence has revealed the importance of breakfast and its positive effect on dietary quality and health condition. Studies in other countries revealed that breakfast irregularity or skipping was associated with lower nutrient intake and diet quality [9–14], higher risk of obesity [14,15] and poorer school performance [16]. Moreover, a meta-analysis of observational studies among adults showed that skipping breakfast was related to an increased risk of type 2 diabetes mellitus [17].

Indonesian national data on breakfast consumption patterns is lacking, especially among adults. Several regional studies among children and adolescents reported breakfast skipping rates between 41 and 58% among this age group [18,19] and that when consumed, the breakfast quantity and quality was poor [19,20]. The contribution of breakfast toward carbohydrate and fat requirements was high but low for fiber and micronutrients [20]. Furthermore, lower breakfast quality was associated with lower socioeconomic status [20,21].

The International Breakfast Research Initiative (IBRI) was set up in 2017 to examine breakfast consumption patterns in different parts of the world, with the aim of developing nutrient recommendations for breakfast on a regional basis. The aim of the current paper is to assess breakfast consumption patterns and quality among Indonesian adults in the context of the IBRI. These data will serve to provide a proposal on breakfast recommendations to policy makers based on the observed practices.

2. Materials and Methods

2.1. Data Source and Study Sample

This study was a secondary data analysis of the 2018 Indonesian Food Barometer (IFB) study conducted by SEAMEO RECFON. Data acquisition was carried out by submitting a formal request to SEAMEO RECFON for the use of their data. The IFB was a cross-sectional survey conducted in six (6) provinces of Indonesia, where 48% of the Indonesian population resides (West Sumatra, Jakarta, West Java, East Java, Bali and South Sulawesi) [22]. The survey consisted of 1665 adults aged more than 18 years who were randomly selected using multistage cluster random sampling. The sample selection was designed to represent urban and rural population in the six (6) provinces included, with oversampling of urban areas to allow for comparison if needed. Of the 1665 subjects, 332 participants were excluded based on under- and overestimation of energy intake using Goldberg Criteria [23]. Thus, current analysis used 1333 subjects. Training for interviewers was conducted to ensure common implementation of fieldwork, data collection and input. Data were collected from December 2017 to March 2018. The protocol was approved by the Human Ethics Committee of Faculty of Medicine Universitas Indonesia (reference 927/UN2.F1/ETIK/V/2017). Written informed consent was obtained from all subjects. Detailed information on this study's design, protocol and methodology has been previously published [24–27].

2.2. Dietary Assessment

Dietary intake data were collected by face-to-face interview using a structured questionnaire to collect information on all food and beverages consumed over a 24-h period. The multiple-pass method was used to record all the foods and drinks consumed the previous day of the survey, from waking up until going to bed again at night. Food photographs were used to aid the estimation of portion sizes [28]. For each food occasion on the day of the interview, participants were asked to name the eating occasions themselves. Data collected represent all days in a week, including the weekend, to have a population picture of the food consumption.

Energy and nutrient intakes were calculated using a customized version of the NutriSurvey for Windows 2007 software. The Indonesian Food Composition Tables (FCT 2017) were used to estimate almost all of the nutrients. We also adopted the Philippines FCT 2019 to complete the total sugar, saturated fatty acid, magnesium, vitamin E and vitamin D. For mixed dishes and food not available in the Indonesian FCT, a recipe approach was used to estimate nutrient content based on raw ingredients from the Indonesian FCT. Two recipes from cookbooks and/or from the Internet were reviewed, and the research team decided on the more plausible recipes to be used. The recipes were then used to calculate the nutrient content of the food. The calculation of nutritional content was determined by the quantity of ingredients required to create a 100 g edible portion of the dish in its serving-ready state. This calculation involves the nutritional information per 100 g of the individual ingredients and takes into account the yield factors and nutrient retention factors, following the guidelines for recipe information and calculation of nutrient composition of prepared foods (dishes) by Bogнар and Piekarski [29].

Quality control was conducted at several stages. During the fieldwork, a supervisor monitored the result of interviews and completeness of the 24-h recall form on a daily basis. The enumerator returned to the subject if the recall form was found to be incomplete. Quality control of the reported nutrient intakes was checked for outliers and implausible energy intake. Participants with implausible energy intake based on Goldberg criteria were excluded [23].

2.3. Breakfast Definition

As previously reported, defining the breakfast meal in dietary surveys can be challenging [30,31]. The Indonesian dietary guidelines define breakfast as food consumed before 9:00 a.m. that provide 15–30% of daily nutrient needs [8]. For the current study, breakfast was defined as the “first meaningful” intake of food and/or drinks consumed before 10:00 a.m., reported from the single 24-h food recall. This definition aims to be in line with previous research studies of the International Breakfast Initiative [30], the definition from the Indonesian Dietary Guidelines [8] and the analysis of the local organization of the food day. The term “meaningful” criteria used in this study was an energy intake of more than 50 Kcal [32–34]. If there was more than one food occasion fulfilling the breakfast definition, the selection of the food occasion to be defined as breakfast was the food occasion defined as breakfast or morning snack by the respondents or the food occasion having an energy intake nearest to 15% of the daily energy recommendation. Breakfast skippers were defined as those who did not report any intake before 10:00 a.m. or had intake before 10:00 a.m. with an energy content of fewer than 50 Kcal.

2.4. Dietary Quality by NRF 9.3

The Nutrient-Rich Food Index (NRF) 9.3 is a validated nutrient profiling method to measure the quality of overall diet [35]. The NRF index calculates nutrient density based on 12 nutrients and total energy intake. These nutrients were divided into 9 qualifying nutrients (NRs) and 3 disqualifying nutrients (LIM). Nutrient reference values for 11 nutrients were based on the Nutrition Label’s Reference for Indonesian 2016 [36], whereas the total sugar followed the recommendation stated in the Ministry of Health Regulation no 30, year 2013 [37].

The qualifying nutrients and reference daily values (DVs) are as follows: protein (60 g), magnesium (350 mg), dietary fiber (30 g), vitamin A (600 RAE), vitamin C (90 mg), vitamin D (15 mcg), potassium (4700 mg), calcium (1100 mg) and iron (22 mg). The disqualifying nutrients and maximum recommended values (MRVs) are sodium (1500 mg), saturated fat (20 g) and total sugar (50 g). The daily energy intake for adults was 2150 Kcal.

The NRF 9.3 was calculated as follows:

$$NRF\ 9.3 = (NR - LIM) \times 100 \quad (1)$$

$$NR = \sum_{i=1}^9 \frac{\text{intake}_i / \text{energy} \times 2150}{DV_i} \quad (2)$$

$$LIM = \sum_{i=1}^3 \frac{\text{intake}_i / \text{energy} \times 2150}{MRV_i} - 1 \quad (3)$$

where intake i is the intake of each nutrient i .

Following the calculation instruction, NRs were truncated at 1, so that an excessively high intake of one nutrient could not compensate for the dietary inadequacy of another. Also, in LIM, only the share in excess of the recommended amount was considered.

2.5. Statistical Analysis

To ensure representativeness of the Indonesian population, the sample was weighted by population density, urban–rural location, age and sex composition, taken from the 2010 Indonesian Census.

Statistical analysis was conducted using SPSS v20 software (IMB, New York, NY, USA). Data were presented as both continuous and categorical. For continuous data, normality was assessed by the Kolmogorov–Smirnov statistic. Due to the skewness of the data, nutrient intakes were presented in median and 25th–75th percentile.

The relationship between socio-descriptive categorical variables and breakfast consumption was examined using chi-square test. The differences in quantitative variables (such as nutrient and energy intakes) were tested using Analysis of Covariance (ANCOVA) for controlling for confounders, including energy intake at breakfast, gender, age, marital status, metropolization and occupation, adjusted where appropriate. An LSD post hoc test was used to examine multicomparisons between groups. The significance level was set at $p < 0.05$.

3. Results

The sociodemographic details of the study population are shown in Supplementary Table S1. The proportion of subjects residing in urban areas was 65.6%. The study population's age ranged from 18 to 88 years, with the majority of subjects aged 30–59 years (57.7%). The study participants had comparable proportions between sexes, and 69.3% of them were married. Around 45% of the subjects had low education (elementary and junior high school with less than or equal to 9 years of education). Muslims made up the majority of the respondents (92.7%).

Following the breakfast definition, 5.2% of the respondents were categorized as breakfast skippers. Breakfast skipping was significantly higher in the urban population (6.5%), among adult 18–29 years (7.3%), among nonmarried individuals (8.9%) and those who were underweight (10%) (Table S1).

Figure 1 shows the various names assigned by the breakfast consumers ($n = 1263$) to their food intake before 10:00 a.m. The majority of the respondents named the intake consumed prior to 10:00 a.m. as breakfast. Snacks, particularly morning snacks and heavy snacks, were other words used to describe morning consumption. Most respondents consumed breakfast at around 7:00 a.m. (32.1%), followed by 8:00 a.m. (27.3%). Few had breakfast in the early hours, including those who had meals before sunrise (*sahur*) during fasting for Muslims.

3.1. Contribution of Breakfast to Daily Energy and Nutrient

Table 1 shows that median daily energy intake was 1626 Kcal, while median intake of energy from breakfast was 396 Kcal. The median daily energy intake was significantly higher among breakfast consumers than breakfast skippers (1639.4 (25th–75th percentile: 1318.7–2120.3) vs 1429.8 (1237.2–1791.6)). The proportions of energy from carbohydrate, sugar, protein, fat and saturated fat for the daily energy intake were 51.9%, 6.5%, 13.8%, 33.6% and 12.8%, respectively. Meanwhile, the contributors of energy during breakfast

were 55.2% from carbohydrate, 1.5% from sugar, 12.7% from protein, 31.2% from fat and 12.2% from saturated fat.

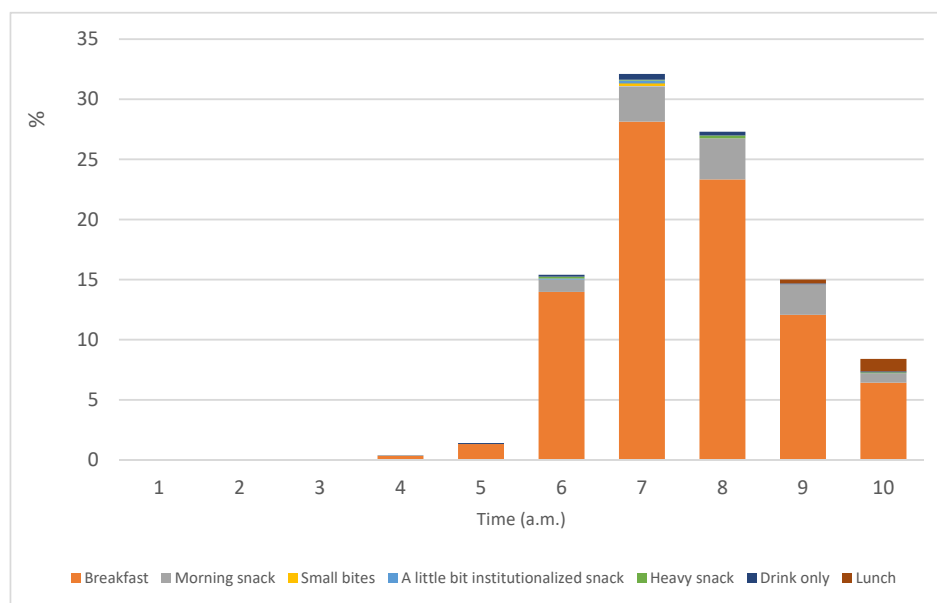


Figure 1. Time and type of morning intake among breakfast consumers (n = 1263).

Among breakfast consumers, the energy and macronutrient intakes at breakfast contributed to around 25% of daily macronutrient intake, except for sugar intake, which contributed 11.7% (Figure 2). All micronutrient intake during breakfast, except for vitamin C and D, contributed to around 21–28% of daily intake. Vitamin C and vitamin D intake during breakfast was very low, contributing to only 8.1% and 6.8% of daily intake, respectively.

Table 1. Median intakes of macro- and micronutrients at breakfast and for the total day among Indonesian adults.

	Breakfast Intake (n = 1263)	Daily Intake (n = 1333)
	Median (25th–75th)	Median (25th–75th)
Macronutrients		
Energy (Kcal)	395.8 (294.2–571.3)	1626.2 (1314.7–2085.1)
Carbohydrate (g)	50.9 (37.8–75.0)	215 (161.2–270)
Carbohydrate (E%)	55.2 (43.3–65.0)	51.9 (44.3–59.7)
Total sugar (g)	1.9 (0.5–8.3)	26.4 (11.7–43.4)
Total sugar (E%)	1.5 (0.5–9.4)	6.5 (2.9–10.4)
Protein (g)	12.8 (7.9–20.5)	57.7 (42.9–75.3)
Protein (E%)	12.7 (8.7–17.6)	13.8 (10.8–16.9)
Fat (g)	13.3 (7.6–23.4)	60.2 (43.0–8.6)
Fat (E%)	31.2 (21.4–41.1)	33.6 (26.8–41.0)
SFA ¹ (g)	5.1 (2.4–10.2)	23.3 (15.7–33.6)
SFA ¹ (E%)	12.2 (6.1–17.9)	12.8 (9.5–16.9)
Dietary fiber (g)	1.5 (0.5–3.0)	6.2 (3.5–10.1)
Micronutrients		
Thiamine (mg)	0.2 (0.1–0.3)	0.7 (0.5–1.1)

Table 1. *Cont.*

	Breakfast Intake (n = 1263)	Daily Intake (n = 1333)
	Median (25th–75th)	Median (25th–75th)
Riboflavin (mg)	0.2 (0.1–0.4)	1.0 (0.6–1.5)
Niacin (mg)	3.2 (1.3–5.6)	13.0 (8.8–18.7)
Vitamin C (mg)	1.0 (0–5.2)	12.8 (4.4–29.4)
Vitamin D (µg)	0.1 (0–0.9)	1.8 (0.5–3.6)
Vitamin E (mg)	1.6 (0.5–3.3)	7.9 (4.6–16.9)
Vitamin A (µg)	156.4 (59.2–356.8)	833.5 (515.3–1389.5)
Calcium (mg)	120.2 (65.0–222.0)	505.3 (345.4–721.4)
Phosphorus (mg)	195.6 (108.9–303.5)	800 (587.6–1062.3)
Iron (mg)	2.7 (1.7–5.0)	13.2 (9.7–17.8)
Zinc (mg)	1.3 (0.7–2.7)	6.2 (4.3–9.8)
Magnesium (mg)	30 (15.3–59.2)	143.4 (89.6–201.3)
Potassium (mg)	244.6 (93.3–467.6)	1048.0 (678.8–1871.0)
Sodium (mg)	285.7 (114.2–593.1)	1368.1 (836.0–2070.2)

¹ SFA: saturated fatty acid.

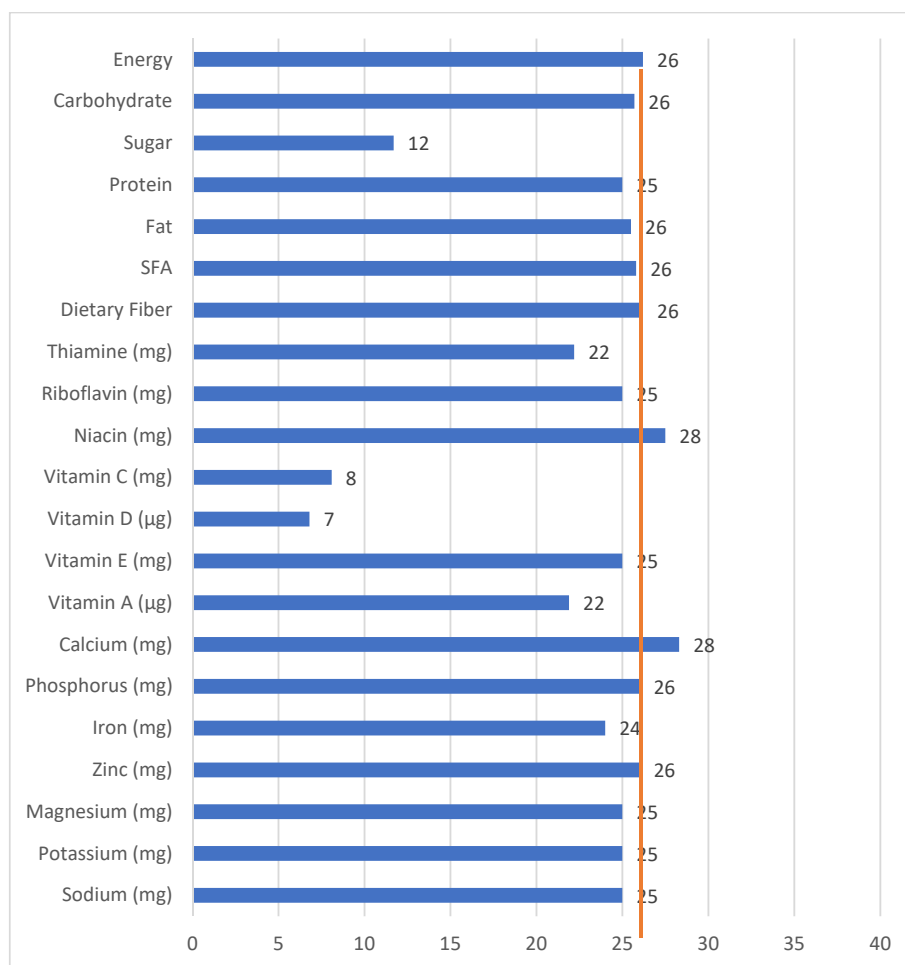


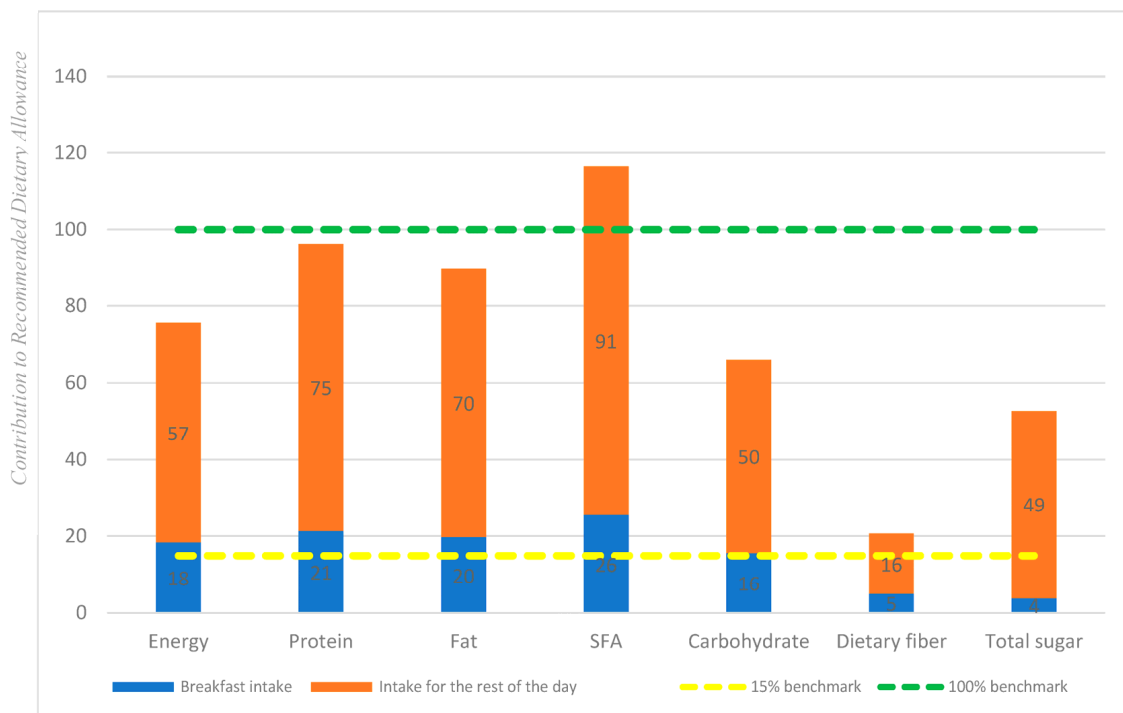
Figure 2. Contribution (%) of macro- and micronutrient intake during breakfast to total daily intake among breakfast consumers (n = 1263). Note: The vertical line is the median percent of daily energy intake consumed at breakfast.

3.2. Contribution of Breakfast to Recommended Daily Allowance (RDA)

Figure 3a,b shows the adequacy of macro- and micronutrient intake against the RDA (marked by green dashed line 100% benchmark) and how much breakfast intake contributed to the RDA. The yellow dashed line shows the 15% benchmark, which was the minimal nutrient contribution expected from breakfast according to the Indonesian Dietary Guidelines [8]. The daily adequacies of median energy and carbohydrate intake were 78% and 66%, respectively, and breakfast contributed 18% and 16% toward the RDAs, respectively. The daily adequacies of protein and total fat reached 98% and 90%, respectively, and the contribution of breakfast intake was around 20%. Daily intakes of saturated fatty acids exceeded the RDA, with breakfast contributing 26%. Daily intakes of dietary fiber reached only 21% of the RDA, with breakfast contributing to only 5%. Total sugar intake from this study was 53% of the recommended allowance of less than 50 g per day, and breakfast contributed only to 4% of this recommendation. Among all micronutrients in Figure 3b, only vitamin A and phosphorus intakes reached the RDA, while sodium intake was close to the maximum recommendation. The lowest daily adequacy of micronutrient intake was found for vitamin D (12%), vitamin C (14%) and potassium (22%). Breakfast contributed to more than 20% of the RDA for niacin, vitamin A and phosphorus, while all other micronutrient intakes during breakfast were less than 15% of the RDA.

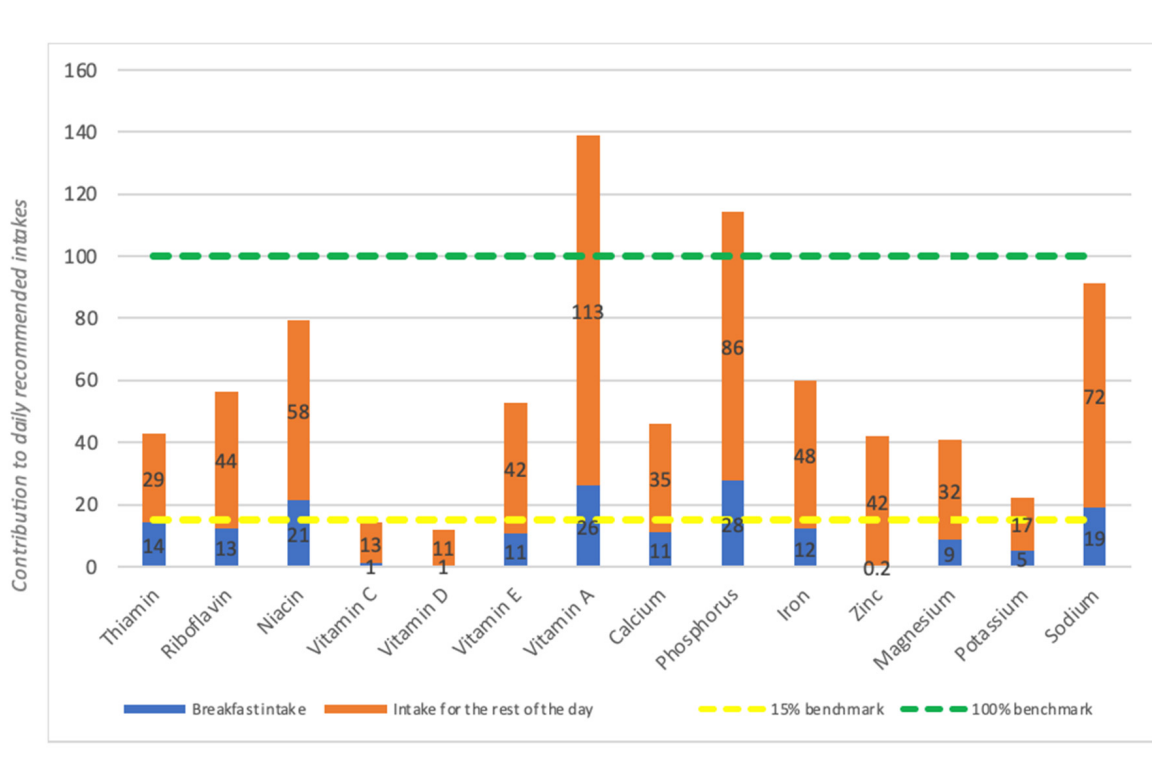
3.3. Breakfast Intake and Diet Quality

Overall, the median NRF score of the study population was 383.5 (25th–75th percentile: 295.2–471.0). There were no statistically significant differences in diet quality as measured by NRF score between breakfast skippers and breakfast consumers (Supplementary Table S2). Furthermore, the NRF score was significantly lower among the younger population, females, those living in urban areas and single individuals and significantly higher among those having lower education, in the lowest wealth index and among the obese population (Supplementary Table S2).



(a)

Figure 3. Cont.



(b)

Figure 3. (a) Percent contribution of median intakes of macronutrient at breakfast (blue box) and for the total day (blue and orange boxes) to the daily recommendation allowance (represented by the green line). (b) Percent contribution of median intakes of micronutrient at breakfast (blue box) and for the total day (blue and orange boxes) to the daily recommendation allowance (represented by the green line). Note: Yellow dashed line is set at the 15% benchmark, which is the minimum nutrient contribution expected from breakfast according to the Indonesian Dietary Guidelines.

Table 2 describes the nutrient intake and food group consumption during breakfast across different levels of diet quality score as measured by NRF 9.3. Table 2 shows that subjects at the highest tertile of the NRF 9.3 score had significantly higher intakes of protein, dietary fiber, B vitamins, vitamin A, vitamin C, potassium, calcium, iron and magnesium and significantly lower sodium intakes from breakfast. Meanwhile, subjects at the lowest tertile of the NRF 9.3 score had significantly higher intakes of saturated fat. The intakes of total energy, fat, carbohydrate, vitamin D, vitamin E and zinc were not significantly different across the NRF 9.3 tertiles.

Table 2. Median Breakfast Nutrient Intake by NRF Tertile.

	Total (n = 1263)	NRF Tertile 1 (n = 407)	NRF Tertile 2 (n = 440)	NRF Tertile 3 (n = 416)	p-Value	Adjusted p-Value ²
	Median (25th–75th)	Median (25th–75th)	Median (25th–75th)	Median (25th–75th)		
Energy (Kcal)	395.8 (294.2–571.3)	392.2 (299.3–568.2)	398.0 (279.8–543.4)	401.5 (31.9–595.8)	0.104	0.485
Macronutrients						
Carbohydrate (g)	50.9 (37.8–75.0)	51.1 (36.4–72.9)	48.9 (31.7–75.9)	54.1 (42.0–79.6)	0.007 *	0.900
Total sugar (g)	1.9 (0.5–8.3)	1.3 (0.3–8.3)	2.0 (0.5–10.5)	2.0 (0.7–6.5)	0.391	0.030 *

Table 2. Cont.

	Total (n = 1263)	NRF Tertile 1 (n = 407)	NRF Tertile 2 (n = 440)	NRF Tertile 3 (n = 416)	p-Value	Adjusted p-Value ²
	Median (25th–75th)	Median (25th–75th)	Median (25th–75th)	Median (25th–75th)		
Protein (g)	12.8 (7.9–20.5)	12.2 (6.8–16.6)	12.6 (7.4–20.8)	15.2 (10.0–25.0)	<0.001 *	<0.001 *
Fat (g)	13.3 (7.6–23.4)	13.1 (7.7–22.0)	13.2 (7.8–22.2)	13.7 (7.2–24.9)	0.859	0.738
SFA ¹ (g)	5.1 (2.4–10.2)	5.4 (2.5–12.9)	4.8 (2.7–9.2)	5.0 (2.3–9.1)	0.001 *	<0.001 *
Dietary fiber (g)	1.5 (0.5–3.0)	1.3 (0.4–2.7)	1.4 (0.5–2.7)	2.1 (0.6–4.3)	<0.001 *	<0.001 *
Micronutrient						
Thiamin (mg)	0.2 (0.1–0.3)	0.1 (0.1–0.2)	0.1 (0.1–0.3)	0.2 (0.1–0.3)	<0.001 *	0.015 *
Riboflavin (mg)	0.2 (0.1–0.4)	0.1 (0.1–0.3)	0.2 (0.1–0.4)	0.3 (0.2–0.5)	<0.001 *	<0.001 *
Niacin (mg)	3.2 (1.3–5.6)	2.8 (0.8–5.0)	3.1 (1.3–5.9)	4.3 (2.6–6.8)	<0.001 *	<0.001 *
Vitamin C (mg)	1.0 (0–5.2)	0.3 (0–3.8)	0.5 (0–3.8)	2.6 (0–8.6)	<0.001 *	0.015 *
Vitamin D (µg)	0.1 (0–0.9)	0.1 (0–0.9)	0 (0–0.9)	0 (0–0.9)	0.470	0.895
Vitamin E (mg)	1.6 (0.5–3.3)	1.5 (0.6–3.7)	1.4 (0.5–2.7)	1.8 (0.5–3.4)	0.009 *	0.167
Vitamin A (µg)	156.4 (59.2–356.8)	106.6 (32.3–301.2)	174.2 (61.8–328.2)	211.0 (73.7–447.8)	<0.001 *	0.002 *
Potassium (mg)	244.6 (93.3–467.6)	163.8 (70.4–340.9)	253.9 (88.2–470.4)	316.1 (140.3–696.7)	<0.001 *	0.001 *
Calcium (mg)	120.2 (65.0–222.0)	89.8 (60.6–176.4)	111.0 (59.9–204.0)	174.0 (85.2–322.1)	<0.001 *	<0.001 *
Phosphorus (mg)	195.6 (108.9–303.5)	171.9 (92.5–260.9)	189.5 (107.1–285.4)	240.0 (138.7–373.5)	<0.001 *	<0.001 *
Iron (mg)	2.7 (1.7–5.0)	2.5 (1.7–3.9)	2.5 (1.6–4.6)	3.6 (2.0–6.5)	<0.001 *	<0.001 *
Zinc (mg)	1.3 (0.7–2.7)	1.1 (0.6–2.0)	1.4 (0.6–2.6)	1.6 (1.0–3.0)	<0.001 *	0.187
Magnesium (mg)	30.0 (15.3–59.2)	24.8 (12.1–44.0)	29.6 (14.9–49.8)	52.5 (18.8–75.3)	<0.001 *	<0.001 *
Sodium (mg)	285.7 (114.2–593.1)	359.6 (142.4–764.2)	335.3 (130.5–589.2)	221.1 (78.6–426.2)	<0.001 *	<0.001 *

¹ SFA: saturated fatty acid; ² p-value adjusted for age, sex, urbanity, marital status and level of education (ANCOVA). *statistically significant different at $p < 0.05$ level.

Further analysis into the food groups (Table 3) showed that the most commonly reported foods consumed at breakfast were cereal grains (74.9%, mostly from rice), followed by vegetables (34.5%), legumes (33.3%), fish (17.8%), snacks (17.3%, e.g., traditional cakes and fritters), eggs (14.4%) and beverages (18.4%, e.g., tea and coffee).

Subjects at the highest NRF tertile had a significantly higher median intake of vegetable and vegetable products, legumes and legume products and snack but lower median intakes of fish and shellfish and eggs and egg products. Meanwhile, subjects among the lowest NRF had a significantly higher median intake of beef and beef products. Moreover, there was a nonsignificant trend towards higher fruit and fruit juice consumption among the highest NRF tertile.

Table 3. Breakfast food group intakes across NRF tertiles.

	Total (n = 1263)		NRF Tertile 1 (n = 407)		NRF Tertile 2 (n = 440)		NRF Tertile 3 (n = 416)		<i>p</i> -Value ¹
	Consumers	Median	Consumers	Median	Consumers	Median	Consumers	Median	
	N (%)	(25th–75th)	N (%)	(25th–75th)	N (%)	(25th–75th)	N (%)	(25th–75th)	
Cereal grains and pasta (g)	947 (74.9)	120 (100–200)	303 (74.3)	120 (90–200)	321 (73)	120 (90–200)	323 (77.7)	105 (100–180)	0.819
Vegetables and vegetable products (g)	436 (34.5)	45 (30–80)	102 (25.1)	40 (30–60)	138 (31.4)	45 (30–60)	196 (47.1)	60 (30–90)	0.023 *
Legumes and legume products (g)	420 (33.3)	80 (45–100)	80 (19.6)	50 (30–80)	140 (31.8)	75 (40–100)	200 (48.1)	90 (50–125)	<0.001 *
Beverages and sugar-sweetened beverages (g)	233 (18.4)	15 (2–25)	69 (16.9)	14 (7–25)	92 (20.8)	18 (2–25)	72 (17.3)	15 (2–25)	0.968
Finfish and shell fish products (g)	225 (17.8)	40 (30–60)	43 (10.5)	50 (40–70)	74 (16.8)	50 (40–70)	109 (26.2)	40 (20–60)	0.040 *
Snack (g)	219 (17.3)	60 (25–100)	82 (20.1)	50 (25–110)	77 (17.4)	60 (25–100)	60 (14.5)	100 (50–120)	0.286
Eggs and egg products (g)	182 (14.4)	60 (60–60)	78 (19.1)	60 (60–60)	59 (13.4)	60 (60–60)	45 (10.9)	60 (40–60)	0.001 *
Sweets (g)	126 (10)	20 (15–20)	34 (8.4)	20 (15–20)	55 (12.6)	20 (10–20)	36 (8.8)	20 (10–20)	0.538
Poultry products (g)	123 (9.8)	40 (30–60)	35 (8.5)	40 (30–50)	46 (10.5)	50 (30–60)	43 (10.2)	30 (30–50)	0.044 *
Baked products (g)	118 (9.3)	60 (40–75)	53 (12.9)	70 (30–75)	43 (9.7)	54 (40–75)	23 (5.4)	70 (39–75)	0.696
Spices and herbs (g)	63 (5)	10 (10–10)	20 (5)	10 (10–10)	17 (3.8)	10 (5–20)	26 (6.3)	10 (5–10)	0.283
Fats and oils (g)	54 (4.3)	5 (3–10)	27 (6.5)	4 (2–12.5)	20 (4.4)	8 (5–8)	8 (1.9)	5 (2–5)	0.090
Beef products (g)	43 (3.4)	50 (40–90)	17 (4.1)	90 (50–100)	18 (4.2)	40 (30–50)	8 (1.8)	50 (50–50)	0.006 *
Fruits and fruit juice (g)	35 (2.8)	120 (50–200)	11 (2.7)	50 (30–300)	9 (1.9)	120 (100–150)	15 (3.7)	200 (50–200)	0.570
Dairy and dairy products (g)	27 (2.1)	27 (21–40)	5 (1.2)	27 (27–27)	10 (2.3)	40 (21–40)	12 (2.8)	27 (10–200)	0.604

¹ Kruskal–Wallis test; *statistically significant different at $p < 0.05$ level.

4. Discussion

After sample weighting, the survey participants' profiles represented the typical Indonesian population when compared with the 2020 Indonesian census (17). The prevalence of breakfast skippers among Indonesian adults in this study is 5.2%, which is somewhat similar with other parts of the world [32,38–41] but lower than that of Canadian adults [42]. The low prevalence of breakfast skippers signifies the importance of the meal to the Indonesian adult population. However, a much higher prevalence of breakfast skipping has been reported among Indonesian children and adolescents [18,19], which could be due to differences in the methodology and definition of breakfast used but also could reflect different eating patterns among these age groups.

The observed socio-demographic profile of breakfast skippers who were younger adults, single and living in urban areas confirms the findings of previous studies in Europe and North and South America [32,40–43]. Food consumption habits change more rapidly among these groups, and these groups were also reported as those at the highest rates of nutrition transition [44].

4.1. Adequacy of Intake and Nutrient Contribution from Breakfast

The overall energy intake in this study was 1627 Kcal, which is similar to the result of a previous national survey [3] and accounts for 77% of the energy of the 2000 Kcal of the Indonesian RDA. Similarly, a meta-analysis of dietary surveys of pregnant women in both Indonesia and Malaysia showed that the energy intakes among Indonesian women averaged just 85% of the Indonesian RDA [45]. The extent of energy under-reporting in the present study using the Goldberg cut-off points [23] was found to be 25%, which compares favorably with similar data from the UK (28%) [46] and the US (25%) [47]. The adult female population in this study has an average weight and height of 58.4 ± 11.7 kg and 151.5 ± 5.8 cm, while for males it is 61.6 ± 12.0 kg and 163.5 ± 6.4 , respectively. These weight and height averages are much lower than US adults [48] and, as such, the lower observed energy intake of 1624 Kcal is not surprising.

The energy intake of breakfast among adult Indonesians (396 Kcal) corresponded to 26% of daily energy intake. The energy contribution of breakfast to daily intake is similar to the results in Malaysia (26%) [39] and the Philippines (30%) [38] but higher compared with America (21.6–23%) and Europe (16–24%) [32,40–43]. The contributions of other macro- and micronutrients are similarly at the level of 21–25%, except for vitamin C (8%), vitamin D (7%) and total sugar (12%). The low vitamin C intake is likely due to the low percent of consumers of vegetables (35%) and fruit at breakfast (3%).

When compared with the RDA, the current contribution of energy from breakfast (18%) was within the range of 15–30% adequacy, as stated in the Indonesian Dietary Guidelines [8]. The contribution of breakfast toward the RDA for other nutrients was not homogenous. However, by the definition used in this study, breakfast contributed to a total of 21–26% of daily macronutrient intake and 16–26% of the RDA, except for dietary fiber. Nevertheless, micronutrient adequacy regarding the RDA is low for most micronutrients, except for vitamin A and phosphorus. This indicates that most Indonesians consume high-energy breakfasts with low nutrient density. This result is in line with findings on low breakfast quality among children [21,49,50].

Previous studies in Indonesia, which are limited, showed the adequacy of vitamin C and vitamin A among different population groups was varied [51–54]. Different populations, age groups and the context of the study may lead to different results. Moreover, the use of single 24-h result leads to variability in vitamin intake assessment. A study among pregnant women in Indonesia showed that six (6) replicate recalls were needed for vitamin A and vitamin C intake assessment to be reliably estimated [55]. However, we believe that vitamin C consumption in the study population is low. The food group consumption showed that intakes of vegetables and fruits at breakfast were very low (45 g) if compared with the recommendation of 400 g/day, which is similar to the previous study [56]. The results from Indonesian basic health research also show that more than 95% of Indonesians

do not consume fruits and vegetables as recommended [3]. Further study is needed to elucidate the different results of vitamin intake profiles in Indonesia. As for vitamin A, an analysis of the Total Diet study showed that the main food source for vitamin A was eggs, palm oils, carrots, water spinach and poultry [53].

Of particular interest was the contribution of breakfast toward total sugar intake, which was considered very low (1.5%). The total intake of sugar itself (26.4 g/d) was found to be low compared with the maximum allowable intake of 50 g/day in Indonesia, but it slightly exceeded the WHO conditional recommendation of 25 g per day [57]. This result was similar to a previous national survey in Indonesia [2,3] and a previous study in the same six provinces [58]. However, the result from this study was lower than a recent study in Jakarta, which found that total sugar intake already reached more than 48 g/day, with beverages as the main contributor of sugar intake. The current study covers a much broader area, covering provinces which have a large rural area, such as East Java and South Sulawesi. The results indicate that half of Indonesian already has a sugar intake above the WHO conditional recommendation, and the situation may be worse in urban areas.

On the other hand, saturated fatty acid intake is already very high, and breakfast's contribution toward the RDA is already 26%, approaching the maximum 30% benchmark. This is in line with previous studies in Indonesia which showed a high contribution of fat toward energy intake [2,59,60], as well as its association with obesity [61,62]. These studies results indicate that reducing fat intake is important and reducing the intake of fat during breakfast could improve overall daily fat intake.

4.2. Breakfast Intake and Diet Quality

Overall diet quality analyzed in the study as measured by NRF score was low, which is in line with previous studies on diet quality in Indonesia [63–65]. In terms of breakfast energy and nutrient intakes, the present analyses also allowed to identify food choices and breakfast patterns at different levels of diet quality, as captured by the NRF 9.3 scores. A higher NRF 9.3 score was associated with increased consumption of healthier foods, such as vegetables, legumes, fruits and fruit juice. The study found that better diet quality was characterized by higher intake of essential nutrients and a more diverse range of food groups compared with the lower tertiles.

The Indonesian government has launched efforts to improve overall diet quality and reduce sugar, salt and fat intake. A community campaign has been launched through the “Gerakan masyarakat hidup sehat” (Community Healthy Life Movement), known as GERMAS, which promotes a balanced diet based on the Indonesian Dietary Guidelines. Moreover, efforts to regulate sugar, salt and fat in processed foods have been enhanced by the obligatory insertion of a nutrition fact panel and voluntary use of the Healthier Food Choice Logo since 2019 [66]. Nonetheless, the impact of these initiatives has not been properly evaluated and, to our knowledge, no specific attention has been given to the breakfast meal.

5. Conclusions

With the breakfast definition used in the study, 5.2% of respondents were categorized as breakfast skippers. Breakfast skipping was significantly higher in the urban population (6.5%), among adults aged 18–29 years (7.3%), among nonmarried individuals (8.9%) and those who were underweight (10%). Furthermore, breakfast quality was significantly lower among the younger population, females, those living in urban areas and single individuals. Breakfast contributed roughly 396 Kcal and 26% of the daily energy in the Indonesian diet, which is high in fat and saturated fat. Saturated fat, vitamin A and sodium intakes are particularly high at breakfast. In contrast, intakes of fiber, zinc, vitamins C and D, potassium, magnesium, iron and several B-vitamins are low at breakfast but also for the total day. Although breakfast consumption versus skipping was not directly associated with the NRF 9.3 score, this study shows that a higher level of NRF 9.3 score was associated with a better nutrient profile of breakfast, which may help with the creation of nutrient-

based guidelines for a balanced breakfast in Indonesia tailored to overcome the current gap in nutrient adequacy. The nutrient-based guidelines for a balanced breakfast are expected to improve breakfast quality, which in turn can improve overall diet quality. Nonetheless, further research is needed to translate the nutrient-based guidelines for balanced breakfast into food-based guidelines, which may be more easily interpreted by consumers. Moreover, more intervention studies are needed to improve breakfast quality based on the current adequacy gap found in this study.

Supplementary Materials: The following supporting information can be downloaded at <https://www.mdpi.com/article/10.3390/nu15173792/s1>, Table S1: Sociodemographic Characteristics of Subjects and their association with breakfast habits; Table S2: Median NRF scores among Breakfast Consumers by Sociodemographics.

Author Contributions: Conceptualization, H.K., R.A., J.F., E.M. and J.-P.P.; data curation, H.K., R.A., J.F., and K.F.; formal analysis, H.K., R.A., K.F. and N.R.M.; funding acquisition, H.K., J.F., O.L. and J.-P.P.; investigation, H.K., R.A. and J.F.; methodology, H.K., R.A., E.M. and J.-P.P.; writing—original draft, H.K. and R.A.; writing—review and editing, H.K., R.A., J.F., E.M., K.F., N.R.M., O.L. and J.-P.P. All authors have read and agreed to the published version of the manuscript.

Funding: The present secondary analysis was funded by Cereal Partners Worldwide through the context of the International Breakfast Research Initiative—Asia (CEREAL/2020/FSLM/001), which was channeled to UHAMKA through collaboration with Taylor’s University.

Institutional Review Board Statement: This study was conducted in accordance with the Declaration of Helsinki and approved by the Human Ethics Committee of the Faculty of Medicine, Universitas Indonesia (reference 927/UN2.F1/ETIK/V/2017).

Informed Consent Statement: Informed consent was obtained from all participants involved in the 2018 Indonesia Food Barometer Survey prior to their participation in the survey and collection of data.

Data Availability Statement: Public availability of the dataset from the 2018 Indonesian Food Barometer by SEAMEO RECFON based on Open Science philosophy is in progress. Raw data sets are available on request from the corresponding author.

Acknowledgments: We acknowledge SEAMEO RECFON for providing data for analysis from the Indonesia Food Barometer Study, of which data collection was supported by Ajinomoto (AJI-NOMOTO/2017/TCHT/001, which channeled to SEAMEO RECFON through collaboration with Taylors University for study on Socio-Cultural Research on Protein Transition (SCRiPT). We acknowledge the critical review and evaluation of the manuscript from Mike Gibney (University College, Dublin) and Sinead Hopkins (co-founder of and IBRI Nutrition Scientist at Cereal Partners Worldwide). We also acknowledge the support from our research assistants Nurulita Aida Rahmasari and Athiya Fadlina for data management during the analysis.

Conflicts of Interest: The authors declare no conflict of interest. To ensure the scientific integrity of the research, a Governing Principles document outlining rights and duties in this research was signed by all researchers or their institutions.

References

1. Ministry of Health Indonesia. *Basic Health Research Report*; National Health Research and Development Center: Jakarta, Indonesia, 2018.
2. Atmarita, A.; Jahari, A.B.; Sudikno, S.; Soekatri, M. Asupan gula, garam, dan lemak di Indonesia: Analisis survei konsumsi makanan individu (SKMI) 2014. *Gizi Indones.* **2017**, *39*, 1–14. [[CrossRef](#)]
3. Ministry of Health Indonesia. *Total Diet Study*; National Health Research and Development Center: Jakarta, Indonesia, 2014.
4. Muslihah, N.; Winarsih, S.; Soemardini, S.; Zakaria, A.; Zainudiin, Z. Kualitas diet dan hubungannya dengan pengetahuan gizi, status sosial ekonomi, dan status gizi. *J. Gizi Dan Pangan* **2013**, *8*, 71–76. [[CrossRef](#)]
5. Amrin, A.P.; Hardinsyah, H.; Dwiriani, C.M. Alternatif indeks gizi seimbang untuk penilaian mutu gizi konsumsi pangan pria dewasa Indonesia. *J. Gizi Dan Pangan* **2013**, *8*, 167–176. [[CrossRef](#)]
6. Stefani, S.; Ngatidjan, S.; Paotiana, M.; Sitompul, K.A.; Abdullah, M.; Sulistianingsih, D.P.; Shankar, A.H.; Agustina, R. Dietary quality of predominantly traditional diets is associated with blood glucose profiles, but not with total fecal Bifidobacterium in Indonesian women. *PLoS ONE* **2018**, *13*, e0208815. [[CrossRef](#)]

7. Putri, P.A.; Briawan, D.; Ekayanti, I. Application of alternate healthy eating index to assess diet quality in male workers. *J. Gizi Dan Pangan* **2018**, *13*, 39–46. [[CrossRef](#)]
8. Ministry of Health Indonesia. *Indonesian Dietary Guidelines*; Ministry of Health Indonesia: Jakarta, Indonesia, 2015.
9. Min, C.; Noh, H.; Kang, Y.-S.; Sim, H.J.; Baik, H.W.; Song, W.O.; Yoon, J.; Park, Y.-H.; Joung, H. Skipping breakfast is associated with diet quality and metabolic syndrome risk factors of adults. *Nutr. Res. Pract.* **2011**, *5*, 455–463. [[CrossRef](#)]
10. Deshmukh-Taskar, P.R.; Radcliffe, J.D.; Liu, Y.; Nicklas, T.A. Do breakfast skipping and breakfast type affect energy intake, nutrient intake, nutrient adequacy, and diet quality in young adults? NHANES 1999–2002. *J. Am. Coll. Nutr.* **2010**, *29*, 407–418. [[CrossRef](#)]
11. Azadbakht, L.; Haghghatdoost, F.; Feizi, A.; Esmailzadeh, A. Breakfast eating pattern and its association with dietary quality indices and anthropometric measurements in young women in Isfahan. *Nutrition* **2013**, *29*, 420–425. [[CrossRef](#)]
12. Zeballos, E.; Todd, J.E. The effects of skipping a meal on daily energy intake and diet quality. *Public Health Nutr.* **2020**, *23*, 3346–3355. [[CrossRef](#)]
13. Ricotti, R.; Caputo, M.; Monzani, A.; Pigni, S.; Antoniotti, V.; Bellone, S.; Prodam, F. Breakfast skipping, weight, cardiometabolic risk, and nutrition quality in children and adolescents: A systematic review of randomized controlled and intervention longitudinal trials. *Nutrients* **2021**, *13*, 3331. [[CrossRef](#)]
14. Otaki, N.; Obayashi, K.; Saeki, K.; Kitagawa, M.; Tone, N.; Kurumatani, N. Relationship between breakfast skipping and obesity among elderly: Cross-sectional analysis of the HEIJO-KYO study. *J. Nutr. Health Aging* **2017**, *21*, 501–504. [[CrossRef](#)]
15. Moreno, L.A.; Gottrand, F.; Huybrechts, I.; Ruiz, J.R.; González-Gross, M.; DeHenauw, S.; Group, H.S. Nutrition and lifestyle in european adolescents: The HELENA (Healthy Lifestyle in Europe by Nutrition in Adolescence) study. *Adv. Nutr.* **2014**, *5*, 615S–623S. [[CrossRef](#)] [[PubMed](#)]
16. Garg, M.; Rajesh, V.; Kumar, P. Effect of breakfast skipping on nutritional status and school performance of 10–16 years old children of Udipi district. *Health Popul. Perspect. Issues* **2014**, *37*, 98–117.
17. Bi, H.; Gan, Y.; Yang, C.; Chen, Y.; Tong, X.; Lu, Z. Breakfast skipping and the risk of type 2 diabetes: A meta-analysis of observational studies. *Public Health Nutr.* **2015**, *18*, 3013–3019. [[CrossRef](#)] [[PubMed](#)]
18. Irdiani, W.; Nindya, T. Correlation between the habit of eating breakfast, nutrient intake and nutritional status of female students in SMAN 3 Surabaya. *Amerta Nutr.* **2017**, *1*, 227–235.
19. Sari, A.F.I.; Briawan, D.; Dwiriani, C.M. Breakfast habit and its quality of schoolgirls in Bogor District. *J. Gizi Dan Pangan* **2012**, *7*, 97–102. [[CrossRef](#)]
20. Susanto, F. Breakfast nutrient analysis among school age children in Jakarta area, Indonesia. *Asian J. Agric. Food Sci.* **2015**, *3*, 455–460.
21. Harahap, H.; Widodo, Y.; Sandjaja, S.; Khouw, I.; Deurenberg, P. Quantity and quality of breakfast of children aged 2.0 to 12.9 years in Indonesia. *Gizi Indones.* **2019**, *42*, 31–42. [[CrossRef](#)]
22. Khusun, H.; Februhartanty, J.; Mognard, E.; Anggraini, R.; Hapsari, P.W.; Poulain, J.P. *Indonesian Food Barometer: Food, Cultures and Health*; Seameo Recfon: Jakarta, Indonesia, 2023.
23. Goldberg, G.; Black, A.; Jebb, S.; Cole, T.; Murgatroyd, P.; Coward, W.; Prentice, A. Critical evaluation of energy intake data using fundamental principles of energy physiology: 1. Derivation of cut-off limits to identify under-recording. *Eur. J. Clin. Nutr.* **1991**, *45*, 569–581.
24. Khusun, H.; Februhartanty, J.; Anggraini, R.; Mognard, E.; Alem, Y.; Noor, M.I.; Karim, N.; Laporte, C.; Poulain, J.-P.; Monsivais, P. Animal and plant protein food sources in Indonesia differ across socio-demographic groups: Socio-cultural research in protein transition in Indonesia and Malaysia. *Front. Nutr.* **2022**, *9*, 762459. [[CrossRef](#)]
25. Khusun, H.; Monsivais, P.; Anggraini, R.; Februhartanty, J.; Mognard, E.; Alem, Y.; Noor, M.I.; Karim, N.; Laporte, C.; Poulain, J.-P. Diversity of protein food sources, protein adequacy and amino acid profiles in Indonesia diets: Socio-Cultural Research in Protein Transition (SCRiPT). *J. Nutr. Sci.* **2022**, *11*, e84. [[CrossRef](#)]
26. Poulain, J.-P.; Smith, W.; Laporte, C.; Tibère, L.; Ismail, M.N.; Mognard, E.; Aloysius, M.; Neethiahnanthan, A.R.; Shamsul, A.B. Studying the Consequences of Modernization on Ethnic Food Patterns: Development of the Malaysian Food Barometer (MFB). *Anthropol. Food* **2015**. Available online: <http://aof.revues.org/7735> (accessed on 1 May 2023).
27. Poulain, J.-P.; Laporte, C.; Tibère, L.; Mognard, E.; Ragavan, N.A.; Zadeh, A.A.; Noor, I.M. Malaysian Food Barometer (MFB): A study of the impact of compressed modernisation on food habits. *Malays. J. Nutr.* **2020**, *26*, 001–017. [[CrossRef](#)]
28. Ministry of Health Indonesia. *Buku Foto Makanan*; National Health Research and Development Center: Jakarta, Indonesia, 2014.
29. Bognár, A.; Piekarski, J. Guidelines for recipe information and calculation of nutrient composition of prepared foods (dishes). *J. Food Compos. Anal.* **2000**, *13*, 391–410. [[CrossRef](#)]
30. Gibney, M.J.; Barr, S.I.; Bellisle, F.; Drewnowski, A.; Fagt, S.; Livingstone, B.; Masset, G.; Varela Moreiras, G.; Moreno, L.A.; Smith, J. Breakfast in human nutrition: The international breakfast research initiative. *Nutrients* **2018**, *10*, 559. [[CrossRef](#)]
31. O’Neil, C.E.; Byrd-Bredbenner, C.; Hayes, D.; Jana, L.; Klinger, S.E.; Stephenson-Martin, S. The role of breakfast in health: Definition and criteria for a quality breakfast. *J. Acad. Nutr. Diet.* **2014**, *12*, S8–S26. [[CrossRef](#)] [[PubMed](#)]
32. Fisberg, M.; Kovalskys, I.; Previdelli, A.N.; Pereira, J.L.; Zimberg, I.Z.; Fisberg, R.; Ferrari, G.; Guajardo, V.; Group, E.S. Breakfast consumption habit and its nutritional contribution in Latin America: Results from the ELANS study. *Nutrients* **2020**, *12*, 2397. [[CrossRef](#)]

33. Chowdhury, E.A.; Richardson, J.D.; Holman, G.D.; Tsintzas, K.; Thompson, D.; Betts, J.A. The causal role of breakfast in energy balance and health: A randomized controlled trial in obese adults. *Am. J. Clin. Nutr.* **2016**, *103*, 747–756. [[CrossRef](#)] [[PubMed](#)]
34. De Castro, J.M. Methodology, correlational analysis, and interpretation of diet diary records of the food and fluid intake of free-living humans. *Appetite* **1994**, *23*, 179–192. [[CrossRef](#)]
35. Drewnowski, A. The Nutrient Rich Foods Index helps to identify healthy, affordable foods. *Am. J. Clin. Nutr.* **2010**, *91*, 1095S–1101S. [[CrossRef](#)]
36. BPOM RI. *Peraturan Badan Pengawasan Obat dan Makanan No 16 tahun 2016 Tentang Acuan Label Gizi*; BPOM RI: Jakarta, Indonesia, 2016.
37. Kementerian Kesehatan Indonesia. *Peraturan Menteri Kesehatan No 30 tahun 2013 tentang Pencantuman Informasi Kandungan Gula, Garam, dan Lemak Serta Pesan Kesehatan untuk Pangan Olahan dan Pangan Siap Saji*; Kementerian Kesehatan Indonesia: Jakarta, Indonesia, 2013.
38. Angeles-Agdeppa, I.; Custodio, M.R.S.; Toledo, M.B. Breakfast in the Philippines: Food and diet quality as analyzed from the 2018 Expanded National Nutrition Survey. *Nutr. J.* **2022**, *21*, 52. [[CrossRef](#)]
39. Mognard, E.; Sanubari, T.P.E.; Alem, Y.; Yuen, J.L.; Ragavan, N.A.; Ismail, M.N.; Poulain, J.-P. Breakfast Practices in Malaysia, Nutrient Intake and Diet Quality: A Study Based on the Malaysian Food Barometer. *Nutrients* **2023**, *15*, 2197. [[CrossRef](#)]
40. Ruiz, E.; Ávila, J.M.; Valero, T.; Rodriguez, P.; Varela-Moreiras, G. Breakfast consumption in Spain: Patterns, nutrient intake and quality. Findings from the ANIBES study, a study from the International Breakfast Research Initiative. *Nutrients* **2018**, *10*, 1324. [[CrossRef](#)] [[PubMed](#)]
41. Bellisle, F.; Hébel, P.; Salmon-Legagneur, A.; Vieux, F. Breakfast consumption in French children, adolescents, and adults: A nationally representative cross-sectional survey examined in the context of the International Breakfast Research Initiative. *Nutrients* **2018**, *10*, 1056. [[CrossRef](#)] [[PubMed](#)]
42. Barr, S.I.; Vatanparast, H.; Smith, J. Breakfast in Canada: Prevalence of consumption, contribution to nutrient and food group intakes, and variability across tertiles of daily diet quality. A study from the International Breakfast Research Initiative. *Nutrients* **2018**, *10*, 985. [[CrossRef](#)]
43. Gaal, S.; Kerr, M.A.; Ward, M.; McNulty, H.; Livingstone, M.B.E. Breakfast consumption in the UK: Patterns, nutrient intake and diet quality. A study from the international breakfast research initiative group. *Nutrients* **2018**, *10*, 999. [[CrossRef](#)]
44. Lipoeto, N.I.; Lin, K.G.; Angeles-Agdeppa, I. Food consumption patterns and nutrition transition in South-East Asia. *Public Health Nutr.* **2013**, *16*, 1637–1643. [[CrossRef](#)] [[PubMed](#)]
45. Agustina, R.; Rianda, D.; Lasepa, W.; Birahmatika, F.S.; Stajic, V.; Mufida, R. Nutrient intakes of pregnant and lactating women in Indonesia and Malaysia: Systematic review and meta-analysis. *Front. Nutr.* **2023**, *10*, 1030343. [[CrossRef](#)]
46. Rennie, K.L.; Coward, A.; Jebb, S.A. Estimating under-reporting of energy intake in dietary surveys using an individualised method. *Br. J. Nutr.* **2007**, *97*, 1169–1176. [[CrossRef](#)]
47. Murakami, K.; Livingstone, M.B.E. Prevalence and characteristics of misreporting of energy intake in US adults: NHANES 2003–2012. *Br. J. Nutr.* **2015**, *114*, 1294–1303. [[CrossRef](#)]
48. Fryar, C.D.; Carroll, M.D.; Gu, Q.; Afful, J.; Ogden, C.L. *Anthropometric reference data for children and adults: United States, 2015–2018*; National Center for Health Statistics: Hyattsville, MD, USA, 2021.
49. Perdana, F.; Hardinsyah, H. Analisis jenis, jumlah, dan mutu gizi konsumsi sarapan anak Indonesia. *J. Gizi Dan Pangan* **2013**, *8*, 39–46. [[CrossRef](#)]
50. Hardinsyah, H.; Aries, M. Jenis pangan sarapan dan perannya dalam asupan gizi harian anak usia 6–12 tahun di Indonesia. *J. Gizi Dan Pangan* **2012**, *7*, 89–96. [[CrossRef](#)]
51. Madanijah, S.; Briawan, D.; Rimbawan, R.; Zulaikhah, Z.; Andarwulan, N.; Nuraida, L.; Sundjaya, T.; Murti, L.; Shah, P.; Bindels, J. Nutritional status of pre-pregnant and pregnant women residing in Bogor district, Indonesia: A cross-sectional dietary and nutrient intake study. *Br. J. Nutr.* **2016**, *116*, S57–S66. [[CrossRef](#)] [[PubMed](#)]
52. Astriningrum, E.P.; Hardinsyah, H.; Nurdin, N.M. Asupan asam folat, vitamin B12 dan vitamin C pada ibu hamil di Indonesia berdasarkan studi diet total. *J. Gizi Dan Pangan* **2017**, *12*, 31–40. [[CrossRef](#)]
53. Prasetyo, T.J.; Hardinsyah, H.; Baliwati, Y.F.; Sukandar, D. The application of probability method to estimate micronutrient deficiencies prevalence of Indonesian adults. *J. Gizi Dan Pangan* **2018**, *13*, 17–26. [[CrossRef](#)]
54. De Pee, S.; Bloem, M.W.; Gorstein, J.; Sari, M.; Yip, R.; Shrimpton, R. Reappraisal of the role of vegetables in the vitamin A status of mothers in Central Java, Indonesia. *Am. J. Clin. Nutr.* **1998**, *68*, 1068–1074. [[CrossRef](#)]
55. Persson, V.; Winkvist, A.; Hartini, T.N.S.; Greiner, T.; Hakimi, M.; Stenlund, H. Variability in nutrient intakes among pregnant women in Indonesia: Implications for the design of epidemiological studies using the 24-h recall method. *J. Nutr.* **2001**, *131*, 325–330. [[CrossRef](#)] [[PubMed](#)]
56. Lasepa, W. *Association between Food Choice Motives with Fruits and Vegetables Consumption among Adult with Different Nutritional Status in Urban and Rural Area of West Java*; Universitas Indonesia: Jakarta, Indonesia, 2018.
57. World Health Organization. *Guideline: Sugars Intake for Adults and Children*; World Health Organization: Geneva, Switzerland, 2015.
58. Khusun, H.; Wiradnyani, A. *Calorie and Physical Activity Survey in Five Urban Population in Indonesia*; SEAMEO RECFON: Jakarta, Indonesia, 2014.

59. Khusun, H.; Wiradnyani, L.A.A.; Siagian, N. Factors associated with overweight/obesity among adults in urban Indonesia. *Penelit. Gizi Dan Makanan* **2015**, *38*, 95–110. [[CrossRef](#)]
60. Khusun, H.; Fahmida, U. Dietary patterns of obese and normal-weight women of reproductive age in urban slum areas in Central Jakarta. *Br. J. Nutr.* **2016**, *116*, S49–S56.
61. Dewi, N.U.; Tanzaha, I.; Solechah, S.A. Obesity determinants and the policy implications for the prevention and management of obesity in Indonesia. *Curr. Res. Nutr. Food Sci.* **2020**, *8*, 942. [[CrossRef](#)]
62. Daya, M.; Pujiyanto, D.A.; Witjaksono, F.; Priliani, L.; Susanto, J.; Lukito, W.; Malik, S.G. Obesity risk and preference for high dietary fat intake are determined by FTO rs9939609 gene polymorphism in selected Indonesian adults. *Asia Pac. J. Clin. Nutr.* **2019**, *28*, 183–191.
63. Agustina, R.; Rianda, D.; Setiawan, E.A. Relationships of Child-, Parents-, and Environment-Associated Determinants with Diet Quality, Physical Activity, and Smoking Habits Among Indonesian Urban Adolescents. *Food Nutr. Bull.* **2022**, *43*, 44–55. [[CrossRef](#)] [[PubMed](#)]
64. Agustina, R.; Nadiya, K.; Andini, E.A.; Setianingsih, A.A.; Sadariskar, A.A.; Prafiantini, E.; Wirawan, F.; Karyadi, E.; Raut, M.K. Associations of meal patterning, dietary quality and diversity with anemia and overweight-obesity among Indonesian school-going adolescent girls in West Java. *PLoS ONE* **2020**, *15*, e0231519. [[CrossRef](#)] [[PubMed](#)]
65. Perdana, S.M.; Hardinsyah, H.; Damayanthi, E. Alternatif indeks gizi seimbang untuk penilaian mutu gizi konsumsi pangan wanita dewasa Indonesia. *J. Gizi Dan Pangan* **2014**, *9*, 43–50.
66. BPOM R. *Peraturan Badan Pengawas Obat Dan Makanan Nomor 22 Tahun 2019 Tentang Informasi Nilai Gizi Pada Label Pangan Olahan*; BPOM, Ed.; BPOM: Jakarta, Indonesia, 2019.

Disclaimer/Publisher's Note: The statements, opinions and data contained in all publications are solely those of the individual author(s) and contributor(s) and not of MDPI and/or the editor(s). MDPI and/or the editor(s) disclaim responsibility for any injury to people or property resulting from any ideas, methods, instructions or products referred to in the content.